



# **NATIONAL QUALITY ASSURANCE PROGRAM**

State Quality Assurance Unit

**District ROP 2021-22**

## Preface

### ***Quality is never an accident; it is always the result of intelligent effort***

*High quality health systems optimize health care in each given context by consistently delivering care that improves and maintains health, by being valued and trusted by people and thereby by responding to changing population needs. Creating value in public health care in Assam through **National Quality Assurance Standard** is the most important aspect of services being rendered at any health facility. Quality of Care has emerged as key thrust area for both Policy Makers and Public Health Practitioners as an instrument of optimal utilization of resources and improving health outcomes and client satisfaction. The NHP 2017 clearly states in its objective – Improve health status through concentrated policy action in all sectors and expand preventive, promotive, curative, palliative and rehabilitative services provided through the public health sector with focus on Quality.*

*Ministry of Health & Family Welfare, Government of India in collaboration with state health departments has developed and implementing a comprehensive quality assurance framework for public health facilities and Programs.*

*The state of Assam not only took the giant strides towards improving quality of care but has now walked miles further in achieving quality in health institutions through strategic planning and creative execution by our dedicated teams who have put citizens' health first. **Providing health services without guaranteeing a minimum level of quality is ineffective, wasteful, and unethical.** It was important that the public health care facilities were benchmarked against set quality standards so as to improve the confidence of the public availing the services while also boosting the morale of the public health service providers in these institutions.*

*High-quality health systems optimise health care in each given context by consistently delivering care that improves or maintains health, by being valued and trusted by all people, and by responding to changing population needs.*

*The Quality journey under NHM, Assam in the year 2020-21 has achieved a different kind of focus due to the COVID pandemic. Infection control practices has become the most essential part of our journey. **Under NQAS focus has been given on 300 facilities across 33 districts across the State. Three facilities namely Kathiatoli BPHC, Nagaon, Mongoldoi Civil Hospital, Darrang and Bhagyapur MPHC, Golaghat have achieved NQAS certification within this year.** Under Improvement of Infection Control Practices, renewed focus was given to Kayakalp wherein a significant increase in facilities was achieved, **total 275 facilities received “Kayakalp” award in 2020-21** compared to 213 health facilities in 2019-20.*

## INDEX

FMR	Particulars	RoP Approvals, 2021-22 (Rs in lakhs)	State HQ Allocation		Total Allocation against 33 Districts		Page No
			Phy. Target	Fresh RoP approvals	Phy. Target	Fresh RoP approvals (Rs in lakhs)	
1.3.2.6	Any other (Housekeeping Service)	414.51			36	414.51	
<b>9.5</b>	<b>Trainings</b>						
<b>9.5.25</b>	<b>Quality Assurance Trainings</b>						
9.5.25.1	Quality Assurance Training (including training for internal assessors at State and District levels)	6.70	2	6.70	0	0	
9.5.25.3	Kayakalp Trainings	18.39	1	1.89	33	16.50	
9.5.25.4	Swachh Swasth Sarvatra training	1.89	1	1.89	0	0	
9.5.25.5	Mera Aspataal Training	1.89	1	1.89	0	0	
9.5.25.6	Any Other (Training)	22.64	2	6.14	33	16.50	
<b>9.5.29.5</b>	<b>IMEP Training</b>						
9.5.29.5.1	TOT on IMEP	6.14	2	6.14	0	0	
9.5.29.5.2	IMEP training for state and district programme managers	13.20	0	0.00	33	0.40	
9.5.29.5.3	IMEP training for medical officers	6.14	2	6.14	0	0	
11.24.4.5	IEC Activity under NQAP, Laqshya, Kayakalp, Mera Aspataal	18.00	0	0	60 facilities	18.00	
12.17.5	Any other (Prescription pad)	249.00	1	249.00	0	0	
12.18.3	Printing of SOPs for implementation of NQAS, Kayakalp & LaQshya	3.00	1	3.00		0	
<b>13</b>	<b>Quality Assurance</b>						
<b>13.1</b>	<b>Quality Assurance</b>						
13.1.1	Quality Assurance Implementation (for traversing gaps)						

**INDEX**

FMR	Particulars	RoP Approvals, 2021-22 (Rs in lakhs)	State HQ Allocation		Total Allocation against 33 Districts		Page No
			Phy. Target	Fresh RoP approvals	Phy. Target	Fresh RoP approvals (Rs in lakhs)	
13.1.1.2	AERB	414.80	1	414.80	0	0	
13.1.1.3	EQAS for Labs	10.60	0	0.00	100 facilities	10.60	
13.1.1.5	Specific Interventions for promotion of patient safety	75.00	0	0.00	60 facilities	75.00	
13.1.1.6	Any other ( QA traversing gaps)	220.08	0	46.461	90 facilities	173.619	
13.1.2	Quality Assurance Assessment (State & district Level assessment cum Mentoring Visit) certification & re certification (State & National Level)	45.78	14	6.90	33 districts	38.88	
13.1.3	Quality Assurance Certification, Re Certification (National & State Certification under NQAS	5.00	5	5.00	0	0	
13.1.4	Quality Assurance Certification, Re Certification (National & State Certification under Laqushya	5.00	5	5.00	0	0	
13.1.5	Incentivisation on attainment of NQAS certification	17.11	0	0.00	3	17.11	
<b>13.2</b>	<b>Kayakalp</b>						
13.2.1	Assessments	91.40	1	43.0	33 districts	48.38	
13.2.2	Kayakalp Awards	434.50	1	434.50	0	0	
13.2.3.1	Bio Medical Wastemanagement	35.28	0	0	7	35.28	
13.2.3.2	Consumables & PPE	46.40	1	46.40	0	0	
13.2.3.3	Liquid waste disposal and treatment	170.00	10	170.00	0	0	
13.2.3.4	Any other (Implementation of Kayakalp)	150.00	0	0.00	300 facilities	150.00	
13.2.4	Contingencies	3.30	1	3.30	0	0	

## INDEX

FMR	Particulars	RoP Approvals, 2021-22 (Rs in lakhs)	State HQ Allocation		Total Allocation against 33 Districts		Page No
			Phy. Target	Fresh RoP approvals	Phy. Target	Fresh RoP approvals (Rs in lakhs)	
13.2.6	Any Other (Hon. For Assessors)	15.02	1	8.89		6.13	
13.3.1	Comprehensive grievance redressal mechanism	21.39	0	0	39 facilities	21.39	
13.3.2	Quality Management System for AEFI surveillance under universal immunization programme	20.28	34	20.28	0	0	
<b>16.1</b>	<b>Program Management</b>						
16.1 (16.1.2.1 .10)	State Quality Assurance Unit (Review meeting)	0.20	2	0.20	0	0	
16.1 (16.1.2.1 .11)	District Quality Assurance Unit (Review Meeting)	1.35	0	0	27	1.35	
16.1 (16.1.2.2 .3)	State Quality Assurance Unit (Monitoring & Supervision)	2.40	1	2.40	0	0	
16.1 (16.1.4.1 .3)	State Quality Assurance Unit (Operational cost)	1.20	1	1.20	0	0	
16.1 (16.1.4.2 .1)	District Quality Assurance Unit (Operational cost)	9.90	0	0.00	33	9.90	
	<b>Total- QA</b>	<b>2557.44</b>		<b>1493.01</b>		<b>1064.43</b>	

**State and District wise total fund breakup for the FY 2021-22**

<b><u>Sl.No.</u></b>	<b><u>District/ State HQ</u></b>	<b><u>Allocated Fund including all activity (Rs. In Lakhs)</u></b>
1	Baksa	44.75
2	Barpeta	51.01
3	Bongaigaon	31.56
4	Cachar	25.65
5	Chirang	17.63
6	Darrang	42.46
7	Dhemaji	32.54
8	Dhubri	34.47
9	South Salmara	13.23
10	Dibrugarh	17.00
11	DimaHasao	25.18
12	Goalpara	48.38
13	Golaghat	45.91
14	Hailakandi	22.83
15	Jorhat	26.50
16	Majuli	18.68
17	Kamrup (M)	50.75
18	Kamrup ( R )	37.49
19	Karbi Anglong	14.47
20	West Karbi Anglong	8.16
21	Karimganj	37.47
22	Kokrajhar	38.78
23	Lakhimpur	39.62
24	Morigaon	39.28
25	Nagaon	54.12
26	Hojai	9.84
27	Nalbari	49.34
28	Sivasagar	48.80
29	Chaideo	19.68
30	Sonitpur	39.08
31	Biswanath Chariali	22.52
32	Tinsukia	34.98
33	Udalguri	22.27
<b>District Total</b>		<b>1064.43</b>
<b>State HQ Allocation</b>		<b>1493.01</b>
<b>TOTAL APPROVAL in Lakh</b>		<b>2557.44</b>

## NATIONAL QUALITY ASSURANCE PROGRAM

Quality Certification program for public health facilities has been launched with aim of recognizing the good performing facilities as well improving credibility of public hospitals in community. Certification is provided against National Quality Assurance Standards (NQAS) on meeting pre-determined criteria. Certified facilities are also provided financial incentives as recognition of their good work. Quality Assurance approach is one way to improve quality of the service delivery in Health Institutions through systematic monitoring, feed-back and pursue opportunities for improving services leading to client satisfaction.

### **Quality Assurance**

The Quality Assurance Programme is made up of two main components:

- Quality Assessment
- Quality Improvement

### OBJECTIVES

- To facilitate the assessment of quality of reproductive and child health (RCH) services at PHCs, CHCs & District Hospitals.
- To improve in service quality by focusing on the gaps identified during the assessment process.
- **To certify 50 health institutions under NQAS.**
- **To certify 60 health institutions under LaQshya.**
- **To certify at least 300 health institutions under Kayakalp.**
- To reduce Hospital Acquired Infections and Surgical site infection rates by promoting cleanliness, hygiene and Infection Control Practices in public Health Care Facilities.
- To incentivize and recognize such public healthcare facilities that show exemplary performance in adhering to standard protocols of cleanliness and infection control.
- To inculcate a culture of ongoing assessment and peer review of performance related to hygiene, cleanliness and sanitation.
- **To create** Laboratory Quality Improvement mandates for focused intervention for improving & standardization the quality of laboratory services through assessment, capacity building, and accreditation.
- **To implement MeraAsapatal Patient Feedback System** which utilises IT enabled tools to collect, analyse and improve the patient satisfaction in public health facilities.



### Activity No 1

## HOUSEKEEPING ACTIVITIES

**FMR Code: 1.3.2.6 (Total Approval = Rs 414.51 Lakhs)**

**FMR Owner & Responsible Person:** At State HQ: PE, QA

**At Dist. Level:** HA/ District Quality Consultant/ DPMs

**Level of the Activity:** District level (25 DHs and 11 SDCHs upgrading to DH)

**Name of the activity:** Any other (please specify)

**Type of the activity:** Ongoing activity, Housekeeping activities of 36 facilities (25 DHs and 11 SDCHs upgrading to DH)

**About the activity and justification:** This is a continued activity for housekeeping of DHs and SDCHs.

For housekeeping activities, HR (Supervisor and unskilled worker) and supplies for housekeeping has been approved for the following facilities based on the number of beds per DH/SDCH in all the districts. Supplies and consumables like toilet cleaning agents (Phenyl, Harpic, Citronella, PPE, Brushes, cleaning materials, mops etc) at DH and SDCH level shall be purchased under this FMR as per approved amount.

*The contract or MOU which will be signed with the Supervisors and cleaners should be in line with the draft MOU shared with the State QA cell. The MOU will clearly contain the cleaning protocols which shall be of GOI guidelines; ISI marked cleaning equipments, disinfectants and materials, hands on training of the cleaners shall be done by the DQC/ HA/ Infection Control Nurse. Penalty clause should be clearly mentioned in the MOU. Quality and cleanliness of the mops and buckets used shall be weekly monitored by the Infection Control Nurse.*

**The funds have been approved for 12 months based on the number of beds and new MCH wing.**



**Table A: Estimated Expenditure for Housekeeping(24 DH, 1 MMCH & 11 SDCH) for FY2021-22 Under FMR Code 1.3.2.6**

Sl	District	Name of the Health Institution	Bed Count	No of Supervisor Skilled(1 supervisor/shift)	cost/month @298.52/day	No of Unskilled	cost/month @257.40/day	Supplies monthly (Details in Table 2)	Total Amount For one Month	Total Amount For 12 Month	Total Approved for facility is 90% of proposed	Total Approved for district is 90% of proposed In Rupees
1	Barpeta	Barpeta Civil Hospital, Kalgachia	200	1	8956	13	100386	16000	125341.6	1504099.2	<b>1353689</b>	<b>1813877</b>
2	Barpeta	Pathsala SDCH	50			5	38610	4000	42610	511320	<b>460188</b>	
3	Bongaigaon	Bongaigaon Civil Hospital	200	1	8956	13	100386	12000	121341.6	1456099.2	<b>1310489</b>	<b>1310489</b>
4	Cachar	Satyendra Mohan Dev Civil Hospital	82	1	8956	6	46332	7000	62287.6	747451.2	<b>672706.1</b>	<b>672706.1</b>
5	Darrang	Mangaldai Civil Hospital	308	1	8956	18	138996	24000	171951.6	2063419.2	<b>1857077</b>	<b>1857077</b>
6	Dhemaji	Dhemaji Civil Hospital	208	1	8956	13	100386	16000	125341.6	1504099.2	<b>1353689</b>	<b>1353689</b>
7	Dhubri	Dhubri Civil Hospital	200	1	8956	13	100386	16000	125341.6	1504099.2	<b>1353689</b>	<b>1353689</b>
8	Dima Hasao	Haflong Civil Hospital	200	1	8956	13	100386	13000	122341.6	1468099.2	<b>1321289</b>	<b>1321289</b>
9	Goalpara	Goalpara Civil Hospital	223	1	8956	13	100386	18000	127341.6	1528099.2	<b>1375289</b>	<b>1375289</b>

10	Golaghat	Bokakhat SDCH	40		8956	4	30888	4000	43843.6	526123.2	<b>473510.9</b>	<b>2747576</b>
11	Golaghat	Swahid Kushal Konwar Civil Hospital	331	1	8956	23	177606	24000	210561.6	2526739.2	<b>2274065</b>	
12	Hailakandi	Sontosh Kumar Roy Civil Hospital	102	1	8956	6	46332	5000	60287.6	723451.2	<b>651106.1</b>	<b>651106.1</b>
13	Kamrup Metro	Sonapur DH	100	1	8956	10	77220	8000	94175.6	1130107.2	<b>1017096</b>	<b>3291162</b>
14	Kamrup Metro	MMCH, Panbazar	350	1	8956	23	177606	24000	210561.6	2526739.2	<b>2274065</b>	
15	Kamrup Rural	Tolaram Bafna Kamrup District Civil Hospital	40	1	8956	4	30888	4000	43843.6	526123.2	<b>473510.9</b>	<b>473510.9</b>
16	Karimganj	Karimganj Civil Hospital	319	1	8956	19	146718	24000	179673.6	2156083.2	<b>1940475</b>	<b>1940475</b>
17	Kokrajhar	R.N.B. Civil Hospital, Gossaigaon	100	1	8956	6	46332	4000	59287.6	711451.2	<b>640306.1</b>	<b>1993995</b>
18	Kokrajhar	Rupnath Brahma Civil Hospital, Kokrajhar	200	1	8956	13	100386	16000	125341.6	1504099.2	<b>1353689</b>	
19	Lakhimpur	Dhakuakhana SDCH	50			5	38610	3000	41610	499320	<b>449388</b>	<b>1980672</b>
20	Lakhimpur	North Lakhimpur Civil Hospital	220	1	8956	15	115830	17000	141785.6	1701427.2	<b>1531284</b>	

21	Morigaon	Morigaon Civil Hospital	200	1	8956	13	100386	16000	125341.6	1504099.2	<b>1353689</b>	<b>1353689</b>
22	Nagaon	Bhogeswari Phukanani Civil Hospital, Nagaon	360	1	8956	21	162162	25000	196117.6	2353411.2	<b>2118070</b>	<b>2118070</b>
23	Nalbari	Swahid Mukunda Kakati Civil Hospital, Nalbari	235	1	8956	15	115830	18000	142785.6	1713427.2	<b>1542084</b>	<b>1542084</b>
24	Charideo	Sonari SDCH	100	1	8956	8	61776	8000	78731.6	944779.2	<b>850301.3</b>	<b>850301.3</b>
25	Sivasagar	Ligripukhuri	45			4	30888	4000	34888	418656	<b>376790.4</b>	<b>2440860.4</b>
26	Sivasagar	Sivasagar Civil Hospital	309	1	8956	21	162162	20000	191117.6	2293411.2	<b>2064070</b>	
27	Sonitpur	Kanaklata Civil Hospital	262	1	8956	19	146718	20000	175673.6	2108083.2	<b>1897275</b>	<b>1897275</b>
28	Tinsukia	Lokpriya Gopinath Bordoloi Civil Hospital	254	1	8956	18	138996	20000	167951.6	2015419.2	<b>1813877</b>	<b>1813877</b>
29	Baksa	Dr. Ravi Boro Civil Hospital Baksa	200	1	8956	13	100386	16000	125341.6	1504099.2	<b>1353689</b>	<b>1353689</b>
30	Chirang	J.S.B CIVIL Hospital Chirang	100	1	8956	5	38610	8000	55565.6	666787.2	<b>600108.5</b>	<b>600108.5</b>

31	Udalguri	Udalguri Civil Hospital	100	1	8956	5	38610	8000	55565.6	666787.2	<b>600108.5</b>	<b>600108.5</b>
32	Majuli	Garmur SDCH	100	1	8956	8	61776	6000	76731.6	920779.2	<b>828701.3</b>	<b>828701.3</b>
33	Biswanath Chariali	Gohpur SDCH	50			5	38610	3000	41610	499320	<b>449388</b>	<b>1089694</b>
34	Biswanath Chariali	Biswanath Chariali SDCH	90	1	8956	6	46332	4000	59287.6	711451.2	<b>640306.1</b>	
35	Jorhat	Titabar SDCH	40			4	30888	4000	34888	418656	<b>376790.4</b>	<b>376790.4</b>
36	South Salmara	Hatsingimari SDCH	50			5	38610	3000	41610	499320	<b>449388</b>	<b>449388</b>
<b>Total</b>			<b>5968</b>	<b>29</b>		<b>405</b>	<b>3127410</b>	<b>442000</b>	<b>3838078</b>	<b>46056936</b>	<b>41451242</b>	<b>41451242</b>

S.no	Name	Quantity/day/rate	Amount (In Rupees)
1	Concentrated Phenyl	1.5lt/day @Rs 100	3000
2	Citronella	4 lt/month @Rs 1000	4000
3	Harpic	2nos/day	4000
4	Miscellaneous (wiper, dry mop, acid, hand brush, PPE)	per month	5000
<b>Total supplies/month in Rs</b>			<b>16000</b>

**Timeline to complete the activity:** This activity needs to be completed by the end of the March, 2022 since this will be a recurring activity month wise.

- **The MOU shall be shared with the State QA cell**
- **A detailed report** shall have to be submitted to the State cell after the completion of the activities along **with the UC and SOE**
- **Any breach in housekeeping funds( if number of sweepers are found to be less than approved or actual payment done is less than approved) shall be taken seriously and reported to the Mission Director for his necessary action.** Kayakalp guidelines shall be followed.

**State and District wise fund breakup under FMR Code- 1.3.2.6**

<b><u>Sl.No.</u></b>	<b><u>District/ State HQ</u></b>	<b><u>Phy. Target</u></b>	<b><u>Allocated Fund In Rupees)</u></b>
1	Baksa	12 months	1353689
2	Barpeta	12 months	1813877
3	Bongaigaon	12 months	1310489

4	Cachar	12 months	672706
5	Chirang	12 months	600108
6	Darrang	12 months	1857077
7	Dhemaji	12 months	1353689
8	Dhubri	12 months	1353689
9	South Salmara	12 months	449388
10	Dibrugarh		0
11	DimaHasao	12 months	1321289
12	Goalpara	12 months	1375289
13	Golaghat	12 months	2747576
14	Hailakandi	12 months	651106
15	Jorhat	12 months	376790
16	Majuli	12 months	828701
17	Kamrup (M)	12 months	3291162
18	Kamrup ( R )	12 months	473511
19	Karbi Anglong		0
20	West Karbi Anglong		0
21	Karimganj	12 months	1940475
22	Kokrajhar	12 months	1993995
23	Lakhimpur	12 months	1980672
24	Morigaon	12 months	1353689
25	Nagaon	12 months	2118070
26	Hojai		0
27	Nalbari	12 months	1542084
28	Sivasagar	12 months	2440860
29	Chaideo	12 months	850301
30	Sonitpur	12 months	1897275
31	Biswanath Chariali	12 months	1089694
32	Tinsukia	12 months	1813877
33	Udalguri	12 months	600108
<b>District Total</b>			<b>41451242</b>
<b>State HQ Allocation</b>			<b>0</b>
<b>Total (In Rupees)</b>			<b>41451242</b>
<b>Total (In Lakhs)</b>			<b>414.512</b>



**Activity 2: Quality Assurance Trainings**

**FMR code 9.5.25 (Total Approval = Rs 53.44 Lakhs)**

<b>FMR code</b>	<b>Particulars</b>	<b>Level of activity</b>	<b>Approved batch</b>	<b>Approved Budget</b>
9.5.25.1	Quality Assurance training (IA and service provider Training)	State	2	6.70 L
9.5.25.3	Kayakalp Trainings	State and District	34 (1 HQ & 33 Districts)	18.39 L
9.5.25.4	Swachh Swasth Sarvatra training	State	1	1.89L
9.5.25.5	Mera Aspatal training	State	1	1.89 L
9.5.25.6	Any other (please specify)	State and District	35 (2 HQ & 33 Districts)	22.64 L
<b>Total</b>				<b>53.44 L</b>

**Activity No 2 a**

**FMR code:** 9.5.25.1 (Total Approval = Rs 6.7 Lakhs)

**FMR Owner & Responsible Person:** At State HQ: State Consultant, QA

**Level of the Activity:** State level

**Name of the activity:** Quality Assurance training (IA and service provider Training)

**Type of the activity:** Ongoing activity

**About the activity:**

A state level training will be conducted under National Quality Assurance Program to train Internal Assessors across various districts. These assessors will get a certificate on successful completion of the training and will be eligible to assess the health care facilities for NQAS/LaQshya/IPHS and Kayakalp. These assessors will be selected from those facilities which will be taken up for NQAS certification in FY 2021-22. One batch of 60 participants will be trained as per GOI guidelines.

*All districts have to send nominations of 2 candidates (Medical officer/HA/DQC/GNM) who are not previously certified in Quality Assurance (HA and DQC are mandatory if not previously certified)*

**Timeline to complete the activity:** This activity will be completed in collaboration with NHSRC, New Delhi since the exit exam is conducted by NHSRC only.

<b>Table 2a: FMR- 9.5.25.1</b>					
<b>Quality Assurance training (IA and service provider Training) Batch size:60, No of days:3</b>					
	<b>Particulars</b>	<b>Unit cost</b>	<b>No of participants</b>	<b>Days</b>	<b>Total Budget in Rs</b>
1	Hiring of venue	10000	1	3	30000
2	TA of Participants	1200	60	1	72000
3	DA of Participants	300	60	3	54000
4	Tea and lunch	350	70	3	73500
5	Honorarium for Resource person	2000	2	3	12000
6	Boarding and lodging for trainers	4000	4	4	64000
7	Folders/pen/stationary	100	50	1	5000
8	Local mobility support	2000	1	2	4000
9	Incidental Exp like study material, resource material, photo copying, flipcharts, job aids	250	60	1	15000
10	Contingency	5500	1	1	5500
<b>Total requirement for 1 batch in Rs</b>					<b>335000</b>
<b>Total requirement for 2 batches in Rs</b>					<b>670000</b>

### **Activity No 2 b**

**FMR code: 9.5.25.2** (Total Approval = Nil)

### **Activity No 2 c**

**FMR code: 9.5.25.3** (Total Approval = Rs 18.39 Lakh)

**FMR Owner & Responsible Person:** At State HQ: State Consultant, QA

**At District:** District Quality Consultant/ HA/DPM

**Level of the Activity:** 1 Master TOT at State level and 1 batch in 33 districts each

**Name of the activity:** Kayakalp Trainings

**Type of the activity:** Ongoing activity

**About the activity**

### District level Kayakalp training

An amount of Rs 0.50 lakh is approved for District level Kayakalp training for 33 districts. The Master TOTs will train the Medical Officers/ Facility In charge/ SN/Lab Tech/ BPM of those facilities which scored more than 50% but less than 70% in Kayakalp Internal/peer assessment. Training will be conducted for 1 day. The presentations and agenda will be same as that of the Master TOT of State level. If physical trainings are possible, then the venue should be well ventilated with good PA system and LCD projector to be used. The training shall be completed within Aug 2021. The quality of the training should be good. Video recording of the training to be done and shared in their webpage/NHM Facebook page.

A State level training will be conducted under National Quality Assurance Program for Kayakalp. In the first phase all districts which have not achieved Kayakalp will be trained with special focus to HWCs. A budget of Rs 1.885 Lakhs is approved @ Rs 1.885 \* 1 training for Kayakalp at State level and Rs 16.5 Lakhs is approved for District level Kayakalp training @ Rs 0.5 Lakh \* 1 batch \* 33 districts

<b>Table 2 c : FMR- 9.5.25.3</b>					
<b>Kayakalp training District level</b>					
<b>Batch size:70, No of days:1</b>					
	<b>Particulars</b>	<b>Unit cost</b>	<b>No of participants</b>	<b>Days</b>	<b>Total Budget in Rs</b>
1	Hiring of venue	5500	1	1	5500
2	TA of Participants	200	70	1	14000
3	Tea and lunch	250	80	1	20000
4	Folders/pen/stationary	60	70	1	4200
5	Honorarium for RP	1000	2	1	2000
6	Contingency (banner etc)	4200	1	1	4300
Requirement for 1 batch at 1 District (in Rs)					<b>50000</b>
<b>B) Total requirement for 33 districts (in Rs)</b>					<b>1650000</b>

**Timeline to complete the activity:** This activity will be completed within Aug, 2021.

### State and District wise fund breakup under FMR Code- 9.5.25.3

<b>Sl.No.</b>	<b>District/ State HQ</b>	<b>Phy. Target</b>	<b>Allocated Fund In Rupees)</b>
1	Baksa	1	50000
2	Barpeta	1	50000
3	Bongaigaon	1	50000
4	Cachar	1	50000
5	Chirang	1	50000
6	Darrang	1	50000
7	Dhemaji	1	50000
8	Dhubri	1	50000
9	South Salmara	1	50000



10	Dibrugarh	1	50000
11	DimaHasao	1	50000
12	Goalpara	1	50000
13	Golaghat	1	50000
14	Hailakandi	1	50000
15	Jorhat	1	50000
16	Majuli	1	50000
17	Kamrup (M)	1	50000
18	Kamrup ( R )	1	50000
19	Karbi Anglong	1	50000
20	West Karbi Anglong	1	50000
21	Karimganj	1	50000
22	Kokrajhar	1	50000
23	Lakhimpur	1	50000
24	Morigaon	1	50000
25	Nagaon	1	50000
26	Hojai	1	50000
27	Nalbari	1	50000
28	Sivasagar	1	50000
29	Chaideo	1	50000
30	Sonitpur	1	50000
31	Biswanath Chariali	1	50000
32	Tinsukia	1	50000
33	Udalguri	1	50000
<b>District Total</b>			<b>1650000</b>
<b>State HQ Allocation</b>			<b>188500</b>
<b>Total (In Rupees)</b>			<b>1838500</b>
<b>Total (In Lakhs)</b>			<b>18.385 Lakhs</b>

#### Activity No 2 d

**FMR code:** 9.5.25.4 (Total Approval = Rs 1.89 Lakh)

**FMR Owner & Responsible Person:** At State HQ: State Consultant, QA

**Level of the Activity:** State level

**Name of the activity:** Swachh Swasth Sarvatra Training

**Type of the activity:** New activity

**About the activity:** In this activity head, funds have been approved for 1 batch of State level training on SSS as below:

<b>Table 2 d: FMR- 9.5.25.4</b>					
<b>Swachh Swasth Sarvatra Training State level</b>					
<b>Batch size:70, No of days:1</b>					
	<b>Particulars</b>	<b>Unit cost</b>	<b>No of participants</b>	<b>Days</b>	<b>Total Budget in Rs</b>
1	Hiring of venue	10000	1	1	10000

2	TA of Participants	800	70	1	56000
3	DA of Participants	300	70	1	21000
4	Accommodation for participants	800	70	1	56000
5	Tea and lunch	350	80	1	28000
6	Folders/pen/stationary	100	70	1	7000
7	Incidental Exp like study material, course material, photo copying, flipcharts, job aids	50	70	1	3500
8	Contingency (banner etc)	7000	1	1	7000
<b>Total requirement for 1 batch at State level (in Rs)</b>					<b>188500</b>

### Activity No 2 e

**FMR code:** 9.5.25.5 (Total Approval = Rs 1.89 Lakh)

**FMR Owner & Responsible Person:** At State HQ: State Consultant, QA

**Level of the Activity:** State level

**Name of the activity:** Mera Aspataal Training

**Type of the activity:** New activity

**About the activity:** In this activity head, funds have been approved for 1 batch of State level training on Mera Aspataal as below. A State level training will be conducted for implementation of Mera Aspatal in 24 DH and 14 SDCH. Hence a state level training is planned to orient one designated person from these selected facilities who will implement the Mera Aspatal.

<b>Table 2e : FMR- 9.5.25.5</b>					
Mera aspatal Training State level					
<b>Batch size:70, No of days:1</b>					
	<b>Particulars</b>	<b>Unit cost</b>	<b>No of participants</b>	<b>Days</b>	<b>Total Budget in Rs</b>
1	Hiring of venue	10000	1	1	10000
2	TA of Participants	800	70	1	56000
3	DA of Participants	300	70	1	21000
4	Accommodation for participants	800	70	1	56000
5	Tea and lunch	350	80	1	28000
6	Folders/pen/stationary	100	70	1	7000
7	Incidental Exp like study material, course material, photo copying, flipcharts, job aids	50	70	1	3500
8	Contingency (banner etc)	7000	1	1	7000
<b>Total requirement for 1 batch at State level (in Rs)</b>					<b>188500</b>

## Activity No 2 f

**FMR code: 9.5.25.6**(Total Approval = Rs 22.64Lakh)

**FMR Owner & Responsible Person: At State HQ:** State Consultant, QA

**At District:** District Quality Consultant/ HA/DPM

**Level of the Activity:** Both State and District level

**Name of the activity:** **Any other (Please specify)** 2 State level trainings and 33 district level trainings are approved for Patient safety and Quality management and improvement trainings.

**Type of the activity:** New and ongoing activity

**About the activity:** In this activity head funds have been approved for 3 types of training. **Two of the TOTs will be conducted at State level and one workshop will be conducted at all Districts.**

- A. State level Training of Trainers (ToT) on Patient Safety):** A budget of Rs 3.071 Lakhs is approved for 2 days of 1 batch of training on patient safety for clinicians, nurses, Hospital Administrators, District Quality Consultants @Rs 3.071 Lakhs \*1 training.
- B. State level Training of Trainers (ToT) on Quality Management (G and H part):** A budget of Rs 3.071 Lakhs is proposed for 1 batch of training on Quality management workshop for Hospital Administrators, District Quality Consultants @Rs 3.071 Lakhs \*1 training. Focus will be given on Quality management part. Resource persons will be from NHSRC.

### District level Training on Patient Safety

- C. District level Training on Patient Safety:** A budget of Rs 0.5 Lakhs is approved for Patient safety and ALS BLS training at 33 districts. This training is to be conducted at District Hospital level with Resource persons either from recognized group of trainers of NABH, or any other agency approved by state quality cell. They shall be hired for both patient safety workshop of about 2-3 days and ALS BLS training of 2 days. This training shall be practical oriented and conducted in workshop manner. Details of workshop shall be shared separately.

### State and District wise fund breakup under FMR Code- 9.5.25.6

<u>Sl.No.</u>	<u>District/ State HQ</u>	<u>Phy. Target</u>	<u>Allocated Fund In Rupees)</u>
1	Baksa	1	50000
2	Barpeta	1	50000
3	Bongaigaon	1	50000
4	Cachar	1	50000
5	Chirang	1	50000
6	Darrang	1	50000
7	Dhemaji	1	50000
8	Dhubri	1	50000
9	South Salmara	1	50000
10	Dibrugarh	1	50000
11	DimaHasao	1	50000
12	Goalpara	1	50000
13	Golaghat	1	50000
14	Hailakandi	1	50000

15	Jorhat	1	50000
16	Majuli	1	50000
17	Kamrup (M)	1	50000
18	Kamrup ( R )	1	50000
19	Karbi Anglong	1	50000
20	West Karbi Anglong	1	50000
21	Karimganj	1	50000
22	Kokrajhar	1	50000
23	Lakhimpur	1	50000
24	Morigaon	1	50000
25	Nagaon	1	50000
26	Hojai	1	50000
27	Nalbari	1	50000
28	Sivasagar	1	50000
29	Chaideo	1	50000
30	Sonitpur	1	50000
31	Biswanath Chariali	1	50000
32	Tinsukia	1	50000
33	Udalguri	1	50000
<b>District Total</b>			<b>1650000</b>
<b>State HQ Allocation</b>			<b>614000</b>
<b>Total (In Rupees)</b>			<b>2264000</b>
<b>Total (In Lakhs)</b>			<b>22.64 Lakhs</b>



<b>Activity 3: IMEP Training</b>				
<b>FMR Code 9.5.29.5 (Total Approval = Rs 14.07 Lakhs)</b>				
<b>Activity No</b>	<b>FMR code</b>	<b>Particulars</b>	<b>Level of activity</b>	<b>Approved Budget</b>
3 a	9.5.29.5.1	ToT on IMEP	State	6.14 L
3 b	9.5.29.5.2	IMEP training for State and District Program Managers	<b>District</b>	<b>13.20 L</b>
3 c	9.5.29.5.3	IMEP training for medical officers	State	<b>6.14L</b>
<b>TOTAL</b>				<b>14.07 L</b>

**Activity3 a: TOT on IMEP**

**FMR Code:9.5.29.5.1** (Total Approval = Rs 6.14 Lakhs)

**FMR Owner & Responsible Person: At State HQ:** State Consultant, QA

**Level of the Activity:** State level

**Name of the activity:** ToT on IMEP

**Type of the activity:** Ongoing activity

**About the activity:** A State level training of the Medical officers and Nurses will be done in two batches across the state to create a pool of trainers on infection control practices @ Rs 307100 for 1 batch \* 2 batches.

Each District has to nominate 2 persons for the TOT (Microbiologist/ ICO/ICN)

The ICN/SN has to be from among the facilities selected for Kayakalp/NQAS/LaQshya

<b>Table 3 a : FMR- 9.5.29.5.1</b>					
<b>State level training of trainers on IMEP</b>					
<b>Batch size:70, No of days:2</b>					
	<b>Particulars</b>	<b>Unit cost</b>	<b>No of participants</b>	<b>Days</b>	<b>Total Budget in Rs</b>
1	Hiring of venue	10000	1	2	20000
2	TA of Participants	800	70	1	56000
3	DA of Participants	300	70	2	42000
4	Accommodation for participants	800	60	2	96000
5	Tea and lunch	350	85	2	59500
6	Folders/pen/stationary/resource	150	73	1	10950

	material				
7	Honorarium for resource person	3	2000	2	12000
8	Contingency (banner etc) and Incidental Exp like study material, photo copying, flipcharts, job aids	10650	1	1	10650
A) Requirement for 1 batch at State level (in Rs)					307100
B) Total Requirement for 2 batches at State level (in Rs)					614200

These 2 trained persons along with trained persons in previous years will function as trainers on IMEP for the respective districts.

**Timeline to complete the activity:** This activity will be completed within **July, 2021**.

### **Activity No 3 b**

**FMR Code:** 9.5.29.5.2(Total Approval = 13.20 Lakh)

**FMR Owner & Responsible Person:**At State HQ: State Consultant, QA

**At District level:** DPMs/DQC

**Name of the activity:** IMEP training for State and District Program Managers

**Type of the activity:** Ongoing activity

Budget of Rs 13.20 Lakhs is approved for 33 districts on IMEP. Details budget break up given below. The District Quality Consultant and One member from State Quality Cell will be the resource person for this training. He/ She have to ensure that good quality training has been imparted. Participants will be priority wise nominated from those health Institutions which have been selected for NQAS/Kayakalp.

**Venue:** District Hospital

**No Of days:** 1 day

**Type of Participants:** CHOs, SNs

<b>Table 3b</b>					
District level training on IMEP for Staff nurses, CHOs and other cleaning staff					
<b>Batch size:80, No of days:1</b>					
	<b>Particulars</b>	<b>Unit cost</b>	<b>No of participants</b>	<b>Days</b>	<b>Total Budget in Rs</b>
1	Hiring of venue	5000	1	1	5000
2	TA of Participants	200	60	1	12000
3	Tea and lunch	250	70	1	17500
4	Folders/pen/stationary	50	60	1	3000
5	Honorarium for RP	1000	1	1	1000
6	Contingency (banner etc)	1500	1	1	1500
Requirement for 1 batch at 1 District (in Rs)					<b>40000</b>
<b>C) Total requirement for 33 districts (in Rs)</b>					<b>1320000</b>

**Note: The tentative budget for the training is provided in the table below which is suggestive; however, norms for RCH trainings must be followed.**

**State and District wise budget breakup under the FMR Code: 9.5.29.5.b**

<b>Sl.No.</b>	<b>District/ State HQ</b>	<b>Phy. Target</b>	<b>Allocated Fund In Rupees)</b>
1	Baksa	1	40000
2	Barpeta	1	40000
3	Bongaigaon	1	40000
4	Cachar	1	40000
5	Chirang	1	40000
6	Darrang	1	40000
7	Dhemaji	1	40000
8	Dhubri	1	40000
9	South Salmara	1	40000
10	Dibrugarh	1	40000
11	DimaHasao	1	40000
12	Goalpara	1	40000
13	Golaghat	1	40000
14	Hailakandi	1	40000
15	Jorhat	1	40000
16	Majuli	1	40000
17	Kamrup (M)	1	40000
18	Kamrup ( R )	1	40000
19	Karbi Anglong	1	40000
20	West Karbi Anglong	1	40000
21	Karimganj	1	40000
22	Kokrajhar	1	40000
23	Lakhimpur	1	40000
24	Morigaon	1	40000
25	Nagaon	1	40000
26	Hojai	1	40000
27	Nalbari	1	40000
28	Sivasagar	1	40000
29	Chaideo	1	40000
30	Sonitpur	1	40000
31	Biswanath Chariali	1	40000
32	Tinsukia	1	40000
33	Udalguri	1	40000
<b>District Total</b>			<b>1320000</b>
<b>State HQ Allocation</b>			<b>0</b>
<b>Total (In Rupees)</b>			<b>1320000</b>
<b>Total (In Lakhs)</b>			<b>13.20 Lakhs</b>

**Activity No 3c**

**FMR code: 9.5.29.5.3**(Total proposal = Rs 6.14 Lakhs)

**Level of the Activity:** State level

**Name of the activity:** IMEP trainingfor medical officers

**Type of the activity:** New activity

**About the activity:**

A State level training of the Medical officers and Nurses will be done in two batches across the state to create a pool of trainers on infection control practices @ Rs 307100 for 1 batch \* 2 batches. This training will be give to SNCU and LR staff nurses and medical officers.

#### **Activity No 4**

**FMR Code:**11.24.4.5 (Total approval = Rs 18.00 Lakhs)

**Level of the Activity:** District level

**Name of the activity:** IEC Activity under NQAP, LaQshya, Kayakalp & Mera-Aspataal (Signages- Approach road, Departmental, Directional and other facility level signages)

**Type of the activity:** Continued activity

**About the activity:**

A budget of Rs 18.00 Lakhs@ Rs 30000\* 60 facilities is approved for IEC campaigns on NQAS, LaQshya, Kayakalp & Infection control, display of outcome indicators, signages etc in 60 facilities which will also be taken up for NQAS subsequently.

<b>FMR Code</b>	<b>Activities</b>	<b>Unit cost in Rs</b>	<b>Target facilities</b>	<b>Total proposal</b>
11.24.4.5	IEC campaigns on NQAS, LAQSHYA, Kayakalp, Infection control practices, display of outcome indicators department wise, signages	30000	60	Rs 18.00 lakhs

<b>Districts</b>	<b>Sl No</b>	<b>HI</b>	<b>Amount</b>
Baksa	1	Jalah CHC	120000
	2	Boroma Model	
	3	Goreswar Model	
	4	Tamulpur CHC	
Barpeta	5	Baghmara	150000
	6	Majgaon	
	7	Bhuladoba	
	8	Mandia Model	
	9	Bhabanipur CHC	
Darrang	10	Kuwaripuriukh Model	90000
	11	Duni Model	
	12	Deomornoi CHC	
Dibrugarh	13	Lezai Kalkhowa Model	60000
	14	Chabua Model	
Dhemaji	15	Begenagor CHC	90000
	16	Jonai CHC	
	17	Jonai BPHC	
Dima Hasao	18	Maibang	30000



	19	Bogribari Model	
Dhubri	20	Motejhar Model	60000
South Salmara	21	Hatsingimari SDCH	30000
Golaghat	22	Sarupathar CHC	30000
	23	Ambari Bazar	
	24	Matia Model	
Goalpara	25	Mornoi CHC	90000
	26	Algapur CHC	
Hailakandi	27	Mohonpur CHC	60000
	28	Nakachari	
	29	Borholla CHC	
	30	Bhogamukh	
Jorhat	31	Kalogaon	120000
	32	Kamalabari CHC	
Majuli	33	Jengrai CHC	60000
Karup M	34	Khetri CHC	30000
	35	Bamunigaon Model	
	36	Rangia Model	
	37	Chaygaon CHC	
Kamrup R	38	Kamalpur CHC	120000
Karbi Anglong	39	Hamren CHC	30000
West Karbi Anglong	40	West Karbi Anglong CHC	30000
Karimganj	41	MGM Kachuadam	30000
Kokrajhar	42	Gosaigaon CHC	30000
	43	Narayan pur CHC	
Lakhimpur	44	Dhalpur CHC	60000
	45	Bhurbandha	
Morigaon	46	Moirabari	60000
	47	Tihu Fru	
	48	Bornordi Model	
Nalbari	49	Belsor Model	90000
	50	Rantholi CHC	
	51	Rupohi Model	
Nagaon	52	Barapujia BPHC	90000
Hojai	53	Hojai FRU	30000
	54	Amuguri CHC	
Sivasagar	55	Khelua BPHC	60000
Charaidew	56	Sapekheti Model	30000
	57	Dhekiajuli CHC	
Sonitpur	58	Jamuguri CHC	60000
Biswanath Chariali	59	Gohpur CHC	30000
Udalguri	60	Khoirabari CHC	30000
Total			1800000

**Following type of signages will be put up at the facility level**

1	Signage for Approach road,
2	Signage for directions
3	Departmental Signages
4	Signages for fire exit
5	Signages for Six Cleans
6	Signages for 7 Rs
7	Signage for BMW
8	Signage for Needle stick injury at every nursing station
9	Signages for Handwashing(6 Steps and 5 moments)
10	White board at every department for Outcome Indicators and common for KPIs
11	SOPs of Fire safety Plan(Committee members and exit plan should be displayed
12	Signages for Infection control practices(Chlorine solution, autoclaving method, 3 bucket mopping)
13	Signages for 7 trays in LR
14	Signages on high alert drugs for LR and SNCU
15	Signages for Accident and Emergency Room
16	Signages on Service provision for Laboratory/Radiology
17	Name of doctors and nurses on duty signages
18	Imp no like ambulance, blood bank, police and referral centre to be displayed
19	Display of Patients rights and responsibilities
20	Display of the process of grievance redressal near the complaint box
21	Display of FREE DRUGs and DIAGNOSTIC services
22	Timings of OPD/lab/pharmacy to be displayed
23	Relevant IECs of individual programs to be displayed
24	Visitors policy to be displayed at relevant points

**State and District wise budget breakup under the FMR Code: 11.24.4.5**

<b><u>Sl.No.</u></b>	<b><u>District/ State HQ</u></b>	<b><u>Phy. Target</u></b>	<b><u>Allocated Fund In Rupees)</u></b>
1	Baksa	4	120000
2	Barpeta	5	150000
3	Bongaigaon	0	0
4	Cachar	0	0
5	Chirang	0	0
6	Darrang	3	90000
7	Dhemaji	3	90000
8	Dhubri	2	60000
9	South Salmara	1	30000
10	Dibrugarh	2	60000
11	DimaHasao	1	30000
12	Goalpara	3	90000
13	Golaghat	1	30000
14	Hailakandi	2	60000

15	Jorhat	4	120000
16	Majuli	2	60000
17	Kamrup (M)	1	30000
18	Kamrup ( R )	4	120000
19	Karbi Anglong	1	30000
20	West Karbi Anglong	1	30000
21	Karimganj	1	30000
22	Kokrajhar	1	30000
23	Lakhimpur	2	60000
24	Morigaon	2	60000
25	Nagaon	3	90000
26	Hojai	1	30000
27	Nalbari	3	90000
28	Sivasagar	2	60000
29	Chaideo	1	30000
30	Sonitpur	2	60000
31	Biswanath Chariali	1	30000
32	Tinsukia	0	0
33	Udalguri	1	30000
<b>District Total</b>			<b>1800000</b>
<b>State HQ Allocation</b>			<b>0</b>
<b>Total (In Rupees)</b>			<b>1800000</b>
<b>Total (In Lakhs)</b>			<b>18.00 Lakhs</b>

#### Activity No 5

**FMR Code:** 12.17.5(Total Approval = Rs 249 Lakhs)

**FMR Owner & Responsible Person:** At State HQ :State Consultant, QA and State Program Manager

**Level of the Activity:** State level

**Name of the activity:** Any other (Please specify)

**Type of the activity:** Ongoing activity

**About the activity:** Printing of prescription pads will be done at State Level

**Timeline to complete the activity:** This activity will be completed within December, 2021.

#### Activity No6

**FMR Code:** 12.18.3(Total Approval = Rs 3 Lakhs)

**FMR Owner & Responsible Person:** At State HQ :State Consultant, QA

**Level of the Activity:** State level

**Name of the activity:** Printing of SOPs for implementation of NQAS, Kayakalp & LaQshya

**Type of the activity:** New activity

**About the activity:** Printing of SOPs will be done at State Level

**Activity 7:Quality Assurance****FMR Code 13 (Total Approval = Rs 1780.94 Lakhs)**

FMR	Particulars	Unit cost (in Rs lakhs)	Qty	Budget (in Rs Lakhs)
13.1.1.2	AERB	414.80		414.80
13.1.1.3	EQAS for Labs	0.11	100	10.60
13.1.1.5	Specific Interventions for promotion of patient safety	1.25	60	75.00
13.1.1.6	Any other (please specify)	2.46	90	220.08

**Activity 7 a****FMR Code: 13.1.1.3(Total Approvals = Rs 10.60 Lakhs)****FMR Owner & Responsible Person: At State HQ :State Consultant, QA****At District : DPMs/DQC/HA/DME****Level of the Activity: District level****Name of the activity: EQAS for Labs****Type of the activity: Ongoing activity**

**About the activity:** A budget of Rs 10.60 Lakhs@ Rs 10600\* 100 CHCs is approved for registering the EQAS of CHC labs. Out of the total 194 CHCs/SDCH, 100 CHCs have been selected based on availability of manpower and equipments. The estimated cost of Rs 10600 is given below for 1 CHC

<b>EQAS PARAMETERS AND AGENCIES</b>			
<b>Department</b>	<b>Parameters</b>	<b>EQAS AGENCY</b>	<b>Registration Fees in Rs</b>
<b>Biochemistry</b>	<b>Glucose, Urea, Creatinine ,T.Bilirubin , T.Protein, Albumin, UA, T.Cholesterol , Triglyceride, HDL, Cholesterol, SGOT(AST), SGPT(ALT), ALP, Amylase,</b>	<b>CMC Vellore</b>	<b>Rs 6000</b>
<b>Haematology</b>	<b>CBC parameters</b>	<b>RML Lucknow</b>	<b>Rs 4600</b>
<b>Total registration fees for 1 CHC for 1 year</b>			<b>Rs 10600</b>
<b>Total registration fees for 100 CHCs for 1 year</b>			<b>Rs 1060000</b>

**Quality Assurance Implementation at Laboratories**



**Brief about the activity:** Internal QC is essential for daily monitoring of precision and accuracy. It refers to a set of procedures undertaken by laboratory staff for continuous and immediate monitoring of laboratory work in order to check the reliability of the report. Quality control can be monitored using control samples that have known values, previously tested by known methods. Eg. Standards, calibrators. At least one control sample should be used for every batch of samples to be analysed. The control samples may be the following depending on the test:

- Anticoagulated whole blood
- Preserved pooled red cells
- Plasma, or
- Serum

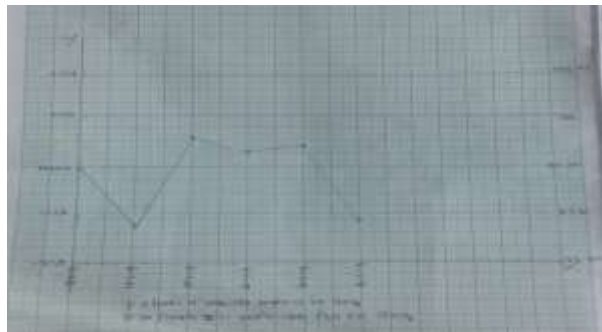
Facilities where fund has been allotted for internal quality control of laboratories shall have to maintain proper record in the form of registers or system generated report to be kept as a record for audit purpose.

### **QUALITY ASSURANCE OF LABORATORIES AT PHCS**

#### **A. Activities to be done at PHCs for Internal Quality Control at Laboratories:**

1. There has to be a system for internal quality assurance in the lab at PHCs.
2. Control samples has to be procured which is available in the market for two parameters only i.e, Blood Sugar and Serum Bilrubin.
3. Control sample to be run before running the patient sample in a day for blood sugar and serum bilirubin.
4. Control sample can only be run for these two parameters at Colorimeter only.
5. The result of control sample will be available in the packet of control sample.
6. After running the control sample through Colorimeter, the Lab tech will have to check the result.
7. If there is no deviation, the patient sample may be run.
8. In case of deviation, which could be possibly due to poor quality of reagent, improper reconstitution of control sample, test tube not cleaned and dried, wrong pipetting etc.
9. Corrective action to be taken on the identified outliers.
10. After taking corrective action on the identified outliers, control sample once again has to be run, if the result falls within the range, only then the patient sample to be run.
11. Record to be maintained as control chart in both the circumstances.

12. The plotting of result shall be recorded in the Levy-Jenning chart as follows :
13. Proper recording should be done of these charts for audit purpose.



#### **B. Activities to be done for PHCS at External Quality Control at Laboratories:**

1. Cross validation of tests to be done again for two parameters only i.e, blood sugar and serum bilirubin.
2. Tie up with any NABL accredited Lab in your District.
3. The separated serum to be sent to the outside Lab with proper identification detail for further testing once in a month.
4. The result of the sample done in the lab is to be matched with the result of serum sample sent to outside lab and record to be maintained.
5. In case of deviation corrective measure to be taken and record to be maintained for audit purpose.
6. For tests under NVBDCP and RNTCP, existing procedure to be followed and record to be maintained accordingly.

Assessment for both the internal and external quality to be done by District Nodal officer notified under CM's Free Diagnostics Programme for the purpose on monthly basis. Moreover, District Level Monitoring Committee notified for the purpose has to monitor the activity.

#### **QUALITY ASSURANCE OF LABORATORIES AT CHCS**

##### **Activities to be done at CHCs for Internal Quality Control at Laboratories:**

1. There has to be a system for internal quality assurance in the lab at CHCs.
2. Control samples have to be procured which is available in the market for Haematology and Bio-chemistry tests.
3. Control sample to be run before running the patient sample in a day for every parameter received for the day under Haematology and Bio-chemistry
4. Control sample can only be run for these parameters in Cell Counter and Semi Auto Analysers available at CHC level.
5. The result of control sample will be available in the packet of control sample itself. After running the control sample through Cell Counter and Semi Auto Analyser, the Lab tech will have to check the result.
6. If there is no deviation, the patient sample may be run.
7. In case of deviation, which could be possibly due to poor machine maintenance, improper programming , poor quality of reagent being used, improper reconstitution of control sample, test

tube not cleaned and dried, wrong pipetting, etc.

8. Corrective action to be taken on the identified outliers and record on corrective action taken to be maintained.

9. After taking the corrective action on the identified outliers, control sample once again should be run with standard or calibrator whichever is applicable. If the result falls within the range, only then the patient sample to be run.

10. Machine generated report for both Cell counter and semi auto analyzer to be maintained for record purpose.

## 2. Activities to be done at CHCs for External Quality Control of Laboratories:

External Quality Control Services (EQAS) is intended to provide competent external proficiency testing so as to improve the existing standards of diagnostic services. It is also essential to monitor laboratories continuing performance, identification of problem in lab and initiation of action for improvement.

Please find below the details showing the parameters for which EQAS to be done and Agencies to be registered with:

EQAS PARAMETERS AND AGENCIES			
Department	Parameters	EQAS AGENCY	Registration Fees
Biochemistry	Glucose, Urea, Creatinine ,T.Bilirubin , T.Protein, Albumin, UA, T.Cholesterol , Triglyceride, HDL, Cholesterol, SGOT(AST), SGPT(ALT), ALP, Amylase,	CMC Vellore	6000
Haematology	CBC parameters	RML Lucknow	4600
Total			10600

### Procedure to be followed for EQAS under Biochemistry Department with CMC Vellore :

- Download the form accessing the link -<http://home.cmcvellore.ac.in/clinqc/about> Registration.aspx
- Fill in the form and send it with demand draft of requisite fee
- CMC Vellore will send the lyophilized sample every month
- Run the samples and upload the values on portal
- Download the report at end of month
- Analyze the results and take corrective actions

### Procedure to be followed for EQAS with RML Lucknow :

- Download the Quality Assurance Program Manual by accessing link <http://www.rmlpathology.com/theme/web/core/rml/images/document/participant-manual.pdf> .
- Follow the steps for registration
- Download the form. Specimen given in Annexure I.

- Fill in the form and send it with demand draft of requisite fee
- RML Lucknow will send the lyophilized sample every month
- Run the samples and upload the values on portal
- Download the report at the end of the month
- Analyze the results and take corrective actions

## Annexure I

Assessment for both the internal and external quality to be done by District Nodal officer notified under CM's Free Diagnostics Programme for the purpose on monthly basis. Moreover, District Level Monitoring Committee notified for the purpose has to monitor the activity.

### List of Health Institutions selected for EQAS

Sl no.	District	Name of the Facility	Facility Type	Allocated Amount in Rs	Amount for district in Rs
1	Baksa	Salbari Model Hospital	Model Hospital	10600	42400
2	Baksa	Jalah BPHC/CHC	CHC	10600	
3	Baksa	Goreswar CHC	CHC	10600	
4	Baksa	Tampur CHC	CHC	10600	
5	Barpeta	Chandmama MH	CHC	10600	63600
6	Barpeta	Mandia MH	CHC	10600	
7	Barpeta	Howly CHC	CHC	10600	
8	Barpeta	Sarukhetri CHC	CHC	10600	
9	Barpeta	Baghmara CHC	CHC	10600	
10	Barpeta	Sorbhog CHC	CHC	10600	
11	Bongaigaon	Bidyapur CHC	CHC	10600	31800
12	Bongaigaon	Manikpur Model Hospital	CHC	10600	



13	Bongaigaon	Boitamari Model Hospital	CHC	10600	
14	Cachar	Kacchudharam Model Hospital	Model Hospital	10600	
15	Cachar	Katigora Model Hospital	Model Hospital	10600	
16	Cachar	Kalain CHC	CHC	10600	
17	Cachar	Tikol Model Hospital	Model Hospital	10600	42400
18	Chirang	Bhetagaon CHC	CHC	10600	
19	Chirang	Bengtol CHC	CHC	10600	
20	Chirang	MG Model Hospital, Subhaijhar	CHC	10600	31800
21	Darrang	Deomornoi	CHC	10600	
22	Darrang	Bazanapathar	CHC	10600	
23	Darrang	Kharupetia	CHC	10600	
24	Darrang	Duni Model Hospital	Model Hospital	10600	
25	Darrang	Kuwariphukhuri	Model Hospital	10600	53000
26	Dhemaji	Bengenagarh CHC	CHC	10600	10600
27	Dhubri	Chapar CHC	CHC	10600	
28	Dhubri	Halakura CHC	CHC	10600	
29	Dhubri	Bagribari	Model Hospital	10600	31800
30	Dibrugarh	Rajgarh CHC	CHC	10600	
31	Dibrugarh	Sasoni CHC	CHC	10600	
32	Dibrugarh	Tengakhat M.G. Model Hospital	Model Hospital	10600	
33	Dibrugarh	Chabua Model Hospital	CHC	10600	
34	Dibrugarh	Lezai Kolakhowa Model Hospital	CHC	10600	53000
35	Dima Hasao	Umrangso CHC	CHC	10600	10600
36	Goalpara	Rangjuli PHC	CHC	10600	
37	Goalpara	Bikali Model Hospital	CHC	10600	21200
38	Golaghat	Merapani CHC	CHC	10600	
39	Golaghat	Dergaon CHC	CHC	10600	
40	Golaghat	Charingia CHC	CHC	10600	31800
41	Hailakandi	Mohanpur	CHC	10600	
42	Hailakandi	Dholai	Model Hospital	10600	21200
43	Jorhat	Kamalabari CHC	CHC	10600	
44	Jorhat	Bhogamukh Model	Model Hospital	10600	42400

45	Jorhat	Nakachari Model	Model Hospital	10600	
46	Jorhat	Mariani CHC (Nagajanka)	CHC	10600	
47	Kamrup M	Sonapur Civil Hospital	DH	10600	10600
48	Kamrup R	Kamalpur	Model Hospital	10600	
49	Kamrup R	Rani CHC	CHC	10600	
50	Kamrup R	Chhaygaon CHC	CHC	10600	
51	Kamrup R	Goroimari CHC	CHC	10600	42400
52	Karbi Anglong	Balijuri	MODEL HOSPITAL	10600	
53	Karbi Anglong	Bokajan CHC	CHC	10600	
54	Karbi Anglong	Donkamokam CHC	CHC	10600	31800
55	Karimganj	Srigauri CHC	CHC	10600	
56	Karimganj	Patharkandi CHC	CHC	10600	
57	Karimganj	MG Model Hospital Baroigram	Model Hospital	10600	
58	Karimganj	MG Model Hospital Dullavcherra	Model Hospital	10600	42400
59	Kokrajhar	Balajan CHC	CHC	10600	
60	Kokrajhar	Dotma CHC	CHC	10600	
61	Kokrajhar	Kachugaon CHC	CHC	10600	
62	Kokrajhar	Gossaigaon CHC	CHC	10600	42400
63	Lakhimpur	Chaporigaon UPHC	UPHC (NQAS certified)	10600	
64	Lakhimpur	Dhalpur CHC	CHC	10600	
65	Lakhimpur	Bihpuria CHC	CHC	10600	
66	Lakhimpur	Bongalmora CHC	CHC	10600	
67	Lakhimpur	Nawboicha CHC	CHC	10600	
68	Lakhimpur	Ghilamora CHC	CHC	10600	63600
69	Morigaon	Chabukdhora	CHC	10600	
70	Morigaon	MGM Hospital Laharighat	Model Hospital	10600	
71	Morigaon	Dolongghat Model Hospital	Model Hospital	10600	
72	Morigaon	MG MODEL HOSPITAL, NAKHOLA	Model Hospital	10600	42400
73	Nagaon	Uluoni	CHC	10600	
74	Nagaon	Bamuni	CHC	10600	53000

76	Nagaon	Mowamari	Model Hospital	10600	
77	Nagaon	Rupohi	Model Hospital	10600	
78	Nagaon	Kachua	Model Hospital	10600	
79	Hojai	Nilbagan	Model Hospital	10600	31800
80	Hojai	Jugijan	Model Hospital	10600	
75	Hojai	Doboka	CHC	10600	
81	Nalbari	Daulashal MPHC	PHC ( NQAS certified)	10600	
82	Nalbari	MG Model Hospital, Belsor	Model Hospital	10600	
83	Nalbari	Chamata CHC	CHC	10600	
84	Nalbari	Bornoddi CHC	CHC	10600	
85	Nalbari	Kokoya CHC	CHC	10600	
86	Nalbari	Bhanganamari CHC	CHC	10600	
87	Nalbari	MG Model Hospital, Adabari	Model Hospital	10600	
88	Sivasagar	Amguri CHC	CHC	10600	10600
89	Sonitpur	North Jamuguri CHC	CHC	10600	
90	Sonitpur	Kolabari Model Hospital	Model Hospital	10600	
91	Sonitpur	Borgang Model Hospital	Model Hospital	10600	
92	Sonitpur	Balichang Model Hospital	Model Hospital	10600	
93	Sonitpur	Kusumtola Model Hospital	Model Hospital	10600	
94	Sonitpur	Sirajuli Model Hospital	Model Hospital	10600	
95	Tinsukia	Ledo MPHC	PHC ( NQAS certified)	10600	
96	Tinsukia	Dangori CHC	CHC	10600	
97	Tinsukia	Phillobari Model Hospital	Model Hospital	10600	
98	Udalguri	Tangla	CHC	10600	31800
99	Udalguri	Orang	CHC	10600	

100	Udalguri	Bhergaon	Model Hospital	10600	
<b>Total</b>					<b>1060000</b>

**State and District wise budget breakup under the FMR Code: 13.1.1.3**

<u>Sl.No.</u>	<u>District/ State HQ</u>	<u>Phy. Target</u>	<u>Allocated Fund In Rupees)</u>
1	Baksa	4	42400
2	Barpeta	6	63600
		3	31800
3	Bongaigaon		
4	Cachar	4	42400
5	Chirang	3	31800
6	Darrang	5	53000
7	Dhemaji	1	10600
8	Dhubri	3	31800
9	South Salmara	0	0
10	Dibrugarh	5	53000
11	DimaHasao	1	10600
12	Goalpara	2	21200
13	Golaghat	3	31800
14	Hailakandi	2	21200
15	Jorhat	3	31800
16	Majuli	1	10600
17	Kamrup (M)	1	10600
18	Kamrup ( R )	4	42400
19	Karbi Anglong	3	31800
20	West Karbi Anglong	0	0
21	Karimganj	4	42400
22	Kokrajhar	4	42400
23	Lakhimpur	6	63600
24	Morigaon	4	42400
25	Nagaon	5	53000
26	Hojai	3	31800
27	Nalbari	7	72400
28	Sivasagar	1	10600
29	Chaideo	0	0
30	Sonitpur	6	63600
31	Biswanath Chariali	0	0
32	Tinsukia	3	31800

33	Udalguri	3	31800
<b>District Total</b>			<b>1060000</b>
<b>State HQ Allocation</b>			<b>0</b>
<b>Total (In Rupees)</b>			<b>1060000</b>
<b>Total (In Lakhs)</b>			<b>10.60 Lakhs</b>

### Activity 7 b

**FMR Code:13.1.1.5 (Total Approval = Rs 75.00 Lakhs)**

**Name of the activity:** Specific Interventions for promotion of patient safety

**Type of the activity:** New activity

**About the activity:** A budget of Rs 75.00 Lakhs is approved for Patient safety measures given in details below for the targeted facilities which will subsequently be taken up for NQAS also. These facilities shall utilize the fund allocated for patient safety measures as described below:

- 1. CCTV installation:** Installation of CCTVs especially around the Labour Room, SNCU and OPD area. The district hospitals can install CCTVs utilizing the Kayakalp Award money fund and RKS funds.
- 2. BLS/ALS training-** A Basic Life Support and Advanced life support training shall be conducted at the District Hospital either by the inhouse Anaesthetist or by hiring good Resource person (Anaesthetist) from outside the facility. The training should be a dedicated two/three day training with resource materials to be provided. The DPM/ DQC/HA may organize the training at Headquarter also and officials from selected facilities may be called. The participants will mainly comprise of Medical officers and Staff nurses.
- 3. Railings on ramp and warning blocks:** All the ramps in the hospital which are used by patients and attendants shall be made safe by putting railings and warning blocks at the beginning and end of the ramp. If the fund provided falls short, RKS fund to be utilized.



## Warning blocks



### Railings can be attached with existing wall

4. **Annual Maintenance of Fire and electrical installations:** The JE (Instrumentation) will implement the AMC of all fire and electrical installations within the selected facilities. This fund can be utilized for earthing, repair of open sockets, loose wires, fencing of electrical devices, putting danger signs wherever necessary etc. Records have to be maintained for annual maintenance. **A ELECTRICAL SAFETY certificate will then be issued to the selected health facility of that district which is a mandatory requirement for NQAS. The fund shall be kept at District HQ and fund to be utilized FOR DHs and for the facilities selected for NQAS.**
5. **Partitions/ Grills for patient safety-** As per the need of the listed facilities, this fund shall be utilized to create partitions/ installation of grills which is required for Patient safety.
6. **Wire mesh-** has to be installed in all the windows of the selected Health facilities. The mesh should be of good quality preferably stainless metal and should prevent entry of mosquitoes and insects especially in patient care areas, mandatorily in Postnatal wards. It should be cleaned on a daily basis to prevent dust accumulation.



Wire mesh Stainless steel/ iron



Netlon wire mesh with valcro

7. **Proper waiting area** for patients with amenities like drinking water, sitting arrangement, **UNTIED FUNDS CAN ALSO BE UTILIZED.**
8. Drug Trolley shall be purchased as per the requirement and need mainly for DHs and CHCs.
9. Call bell system for patient: shall be installed mainly in Postnatal wards, Post Surgery wards, Medicine wards etc.



10. Smoke detectors shall be installed in critical care areas like LR, SNCU, OTs, Post natal Wards etc.



11. **Fire safety measures and mock drills – CODE RED to be implemented in all district hospitals and high load CHCs. Already in previous years funds have been provided for strengthening fire alarm system, mock drills etc.** Mock drills have to be conducted at health facilities. Every district headquarter will ensure mock drills in all facilities with the help of District Disaster management authority. The fire department can also be utilized for mock drills on disaster and fire safety. **Records of the training have to be maintained at the facility with date and duration of drills with names of attendees and authorized signature of the trainer and the facility in charge.** Installation of fire extinguishers, fire alarms, directional signage for fire exits(**green fluorescent colour at about one feet above from ground level**), fire exit plan have to be established. The purpose of fire drills in hospitals is to ensure that everyone knows how to exit safely as quickly as possible if a fire, smoke, carbon monoxide or other emergency occurs. People need to recognize the sound of the fire alarm. Roles and responsibilities of various staff has to be clearly defined during such a disaster. A common place should be identified in the premises of the facility preferably an open area.

<b>Particulars</b>	<b>Budget in Rs</b>
CCTV	30000
BLS/ALS related activity	10000
Ramps renovation and Warning blocks	20000
Railing on ramps	10000
Grills/ Partitions for pt safety	40000
Drinking water facility	15000
Total requirement for 1 facility	Rs 125000
<b>Total requirement for 60 facilities</b>	<b>Rs 75.00 Lakhs</b>



Districts	SI No	Health Institution	Total Facility wise allocation	Total District allocation
Baksa	1	Jalah CHC	125000	500000
	2	Boroma Model	125000	
	3	Goreswar Model	125000	
	4	Tamulpur CHC	125000	
Barpeta	5	Baghmara	125000	625000
	6	Majgaon	125000	
	7	Bhuladoba	125000	
	8	Mandia Model	125000	
	9	Bhabanipur CHC	125000	
Darrang	10	Kuwaripuriukh Model	125000	375000
	11	Duni Model	125000	
	12	Deomorno CHC	125000	
Dibrugarh	13	Lezai Kalkhowa Model	125000	250000
	14	Chabua Model	125000	
Dhemaji	15	Begenagor CHC	125000	375000
	16	Jonai CHC	125000	
	17	Jonai BPHC	125000	
Dima Hasao	18	Maibang	125000	125000
Dhubri	19	Bogribari Model	125000	250000
	20	Motejhar Model	125000	
South Salmara	21	Hatsingimari SDCH	125000	125000
Golaghat	22	Sarupathar CHC	125000	125000
Goalpara	23	Ambari Bazar	125000	375000
	24	Matia Model	125000	
	25	Morno CHC	125000	
Hailakandi	26	Algapur CHC	125000	250000
	27	Mohonpur CHC	125000	
Jorhat	28	Nakachari	125000	500000
	29	Borholla CHC	125000	
	30	Bhogamukh	125000	
	31	Kalogaon	125000	
Majuli	32	Kamalabari CHC	125000	250000
	33	Jengrai CHC	125000	
Karup M	34	Khetri CHC	125000	125000
Kamrup R	35	Bamunigaon Model	125000	500000
	36	Rangia Model	125000	
	37	Chaygaon CHC	125000	
	38	Kamalpur CHC	125000	
Karbi Anglong	39	Hamren CHC	125000	125000
West Karbi	40	West Karbi Anglong CHC	125000	125000

Anglong				
Karimganj	41	MGM Kachuadam	125000	125000
Kokrajhar	42	Gosaigaon CHC	125000	125000
Lakhimpur	43	Narayan pur CHC	125000	250000
	44	Dhalpur CHC	125000	
Morigaon	45	Bhurbandha	125000	250000
	46	Moirabari	125000	
Nalbari	47	Tihu Fru	125000	375000
	48	Bornordi Model	125000	
	49	Belsor Model	125000	
Nagaon	50	Rantholi CHC	125000	375000
	51	Rupohi Model	125000	
	52	Barapujia BPHC	125000	
Hojai	53	Hojai FRU	125000	125000
Sivsagar	54	Amuguri CHC	125000	250000
	55	Khelua BPHC	125000	
Charaidew	56	Sapekheti Model	125000	125000
Sonitpur	57	Dhekiajuli CHC	125000	250000
	58	Jamuguri CHC	125000	
Biswanath Chariali	59	Gohpur CHC	125000	125000
Udalguri	60	Khoirabari CHC	125000	125000
<b>Total</b>				<b>7500000</b>

### Activity 7 c

**FMR Code:13.1.1.6 (Total Approval = Rs 220.08 Lakhs)**

**Name of the activity:** Any Other (Please Specify)

**Type of the activity:** Ongoing activity

**Level of the activity:** State level

**About the activity:** A budget of Rs 2.44 lakhs is approved for upgrading the Accident and emergency rooms of 71 facilities including all DHs as per NQAS standards and for fire safety measures, etc given in details below. These facilities will subsequently be taken up for NQAS also. Proper planning should be done as per the NQAS accident emergency checklist. This plan should be discussed and approved by the state quality cell. Since this fund will not be approved again so DPM, DQC and HA's should meticulously utilize this fund.

Dis tricts	Sl No	Facility Name	Screen s and Curt ains	Drinki ng water facility	Toilet Renova tion	Triag e area	Wire Mesh	Fire Extin guisher	CC TV	Specul um D & E Set	X-Ray view box	Drug s trolle y	Bed pan	Foots tep	Powe r Back up	Spot Light	Fire Safet y	Total facilit y wise	Total Distri ct wise
Bak sa	1	Baksa DH	30000	10000	10000	10000	2000	1000	8000	6000	20000	20000	2400	3500	19980	1650	100000	244530	733590
	2	Salbari Model	30000	10000	10000	10000	2000	1000	8000	6000	20000	20000	2400	3500	19980	1650	100000	244530	
	3	Tamulpur CHC	30000	10000	10000	10000	2000	1000	8000	6000	20000	20000	2400	3500	19980	1650	100000	244530	
Bar peta	4	Barpet DH	30000	10000	10000	10000	2000	1000	8000	6000	20000	20000	2400	3500	19980	1650	100000	244530	1222650
	5	Baghmara	30000	10000	10000	10000	2000	1000	8000	6000	20000	20000	2400	3500	19980	1650	100000	244530	
	6	Barpet Road CHC	30000	10000	10000	10000	2000	1000	8000	6000	20000	20000	2400	3500	19980	1650	100000	244530	
	7	Bhuladob a	30000	10000	10000	10000	2000	1000	8000	6000	20000	20000	2400	3500	19980	1650	100000	244530	
Bon gaig aon	8	Mandia Model	30000	10000	10000	10000	2000	1000	8000	6000	20000	20000	2400	3500	19980	1650	100000	244530	733590
	9	Manikpur CHC	30000	10000	10000	10000	2000	1000	8000	6000	20000	20000	2400	3500	19980	1650	100000	244530	
	10	Bongaiga on DH	30000	10000	10000	10000	2000	1000	8000	6000	20000	20000	2400	3500	19980	1650	100000	244530	
	11	Abhyapur i CHC	30000	10000	10000	10000	2000	1000	8000	6000	20000	20000	2400	3500	19980	1650	100000	244530	

<b>Cachar</b>	12	SM Dev Civil Hospital	30000	10000	10000	10000	2000	1000	8000	6000	20000	20000	2400	3500	19980	1650	100000	244530	<b>733590</b>
	13	Kalain CHC	30000	10000	10000	10000	2000	1000	8000	6000	20000	20000	2400	3500	19980	1650	100000	244530	
	14	Kathigarh CHC	30000	10000	10000	10000	2000	1000	8000	6000	20000	20000	2400	3500	19980	1650	100000	244530	
<b>Chirang</b>	15	JSB Civil Hospita	30000	10000	10000	10000	2000	1000	8000	6000	20000	20000	2400	3500	19980	1650	100000	244530	<b>244530</b>
<b>Daranga</b>	16	Mangal dai Civil Hospita	30000	10000	10000	10000	2000	1000	8000	6000	20000	20000	2400	3500	19980	1650	100000	244530	<b>733590</b>
	17	Duni Model	30000	10000	10000	10000	2000	1000	8000	6000	20000	20000	2400	3500	19980	1650	100000	244530	
	18	Deomorni CHC	30000	10000	10000	10000	2000	1000	8000	6000	20000	20000	2400	3500	19980	1650	100000	244530	
<b>Dibrugarh</b>	19	Moran Tiloi FRU	30000	10000	10000	10000	2000	1000	8000	6000	20000	20000	2400	3500	19980	1650	100000	244530	<b>489060</b>
	20	Lezai Kalkhowa Model	30000	10000	10000	10000	2000	1000	8000	6000	20000	20000	2400	3500	19980	1650	100000	244530	
<b>Dhemaji</b>	21	Dhemaji Civil	30000	10000	10000	10000	2000	1000	8000	6000	20000	20000	2400	3500	19980	1650	100000	244530	<b>733590</b>
	22	Begenagor CHC	30000	10000	10000	10000	2000	1000	8000	6000	20000	20000	2400	3500	19980	1650	100000	244530	
	23	Jonai BPHC	30000	10000	10000	10000	2000	1000	8000	6000	20000	20000	2400	3500	19980	1650	100000	244530	
<b>Dima Hasao</b>	24	Haflong DH	30000	10000	10000	10000	2000	1000	8000	6000	20000	20000	2400	3500	19980	1650	100000	244530	<b>489060</b>
	25	Maibang	30000	10000	10000	10000	2000	1000	8000	6000	20000	20000	2400	3500	19980	1650	100000	244530	
<b>Dhubri</b>	26	Dhubri Civil	30000	10000	10000	10000	2000	1000	8000	6000	20000	20000	2400	3500	19980	1650	100000	244530	<b>733590</b>
	27	Gauripur CHC	30000	10000	10000	10000	2000	1000	8000	6000	20000	20000	2400	3500	19980	1650	100000	244530	
	28	Motejhar Model	30000	10000	10000	10000	2000	1000	8000	6000	20000	20000	2400	3500	19980	1650	100000	244530	
<b>South Salmara</b>	29	Hatsingimari SDCH	30000	10000	10000	10000	2000	1000	8000	6000	20000	20000	2400	3500	19980	1650	100000	244530	<b>244530</b>
<b>Golaghat</b>	30	Golaghat DH	30000	10000	10000	10000	2000	1000	8000	6000	20000	20000	2400	3500	19980	1650	100000	244530	<b>489060</b>
	31	Sarupathar CHC	30000	10000	10000	10000	2000	1000	8000	6000	20000	20000	2400	3500	19980	1650	100000	244530	
<b>Goalpar</b>	32	Goalpara DH	30000	10000	10000	10000	2000	1000	8000	6000	20000	20000	2400	3500	19980	1650	100000	244530	<b>733590</b>

a	33	Matia Model	30000	10000	10000	10000	2000	1000	8000	6000	20000	20000	2400	3500	19980	1650	100000	244530	
	34	Mornoi CHC	30000	10000	10000	10000	2000	1000	8000	6000	20000	20000	2400	3500	19980	1650	100000	244530	
Hailakandi	35	Hailakandi DH	30000	10000	10000	10000	2000	1000	8000	6000	20000	20000	2400	3500	19980	1650	100000	244530	489060
	36	Mohonpur CHC	30000	10000	10000	10000	2000	1000	8000	6000	20000	20000	2400	3500	19980	1650	100000	244530	
Jorhat	37	Titabor SDCH	30000	10000	10000	10000	2000	1000	8000	6000	20000	20000	2400	3500	19980	1650	100000	244530	489060
	38	Borholla CHC	30000	10000	10000	10000	2000	1000	8000	6000	20000	20000	2400	3500	19980	1650	100000	244530	
Majuli	39	Kamalabari CHC	30000	10000	10000	10000	2000	1000	8000	6000	20000	20000	2400	3500	19980	1650	100000	244530	244530
Karup M	40	Khetri CHC	30000	10000	10000	10000	2000	1000	8000	6000	20000	20000	2400	3500	19980	1650	100000	244530	244530
Kamrup R	41	Bamunigaoon Model	30000	10000	10000	10000	2000	1000	8000	6000	20000	20000	2400	3500	19980	1650	100000	244530	733590
	42	Rangia Model	30000	10000	10000	10000	2000	1000	8000	6000	20000	20000	2400	3500	19980	1650	100000	244530	
	43	Chaygaon CHC	30000	10000	10000	10000	2000	1000	8000	6000	20000	20000	2400	3500	19980	1650	100000	244530	
Karbi Anglong	44	Hamren CHC	30000	10000	10000	10000	2000	1000	8000	6000	20000	20000	2400	3500	19980	1650	100000	244530	244530
West Karbi Anglong	45	West Karbi Anglong CHC	30000	10000	10000	10000	2000	1000	8000	6000	20000	20000	2400	3500	19980	1650	100000	244530	244530
Kariangaj	46	Karimganj DH	30000	10000	10000	10000	2000	1000	8000	6000	20000	20000	2400	3500	19980	1650	100000	244530	489060
	47	MGM Kachuadam	30000	10000	10000	10000	2000	1000	8000	6000	20000	20000	2400	3500	19980	1650	100000	244530	
Kokrajhar	48	Kokrajhar DH	30000	10000	10000	10000	2000	1000	8000	6000	20000	20000	2400	3500	19980	1650	100000	244530	489060
	49	Gosaigaon CHC	30000	10000	10000	10000	2000	1000	8000	6000	20000	20000	2400	3500	19980	1650	100000	244530	
Lakhimpur	50	Lakhimpur DH	30000	10000	10000	10000	2000	1000	8000	6000	20000	20000	2400	3500	19980	1650	100000	244530	489060
	51	Boginodi Model	30000	10000	10000	10000	2000	1000	8000	6000	20000	20000	2400	3500	19980	1650	100000	244530	
Morigao	52	Morigaon DH	30000	10000	10000	10000	2000	1000	8000	6000	20000	20000	2400	3500	19980	1650	100000	244530	733590

n	53	Nakhola Model	30000	10000	10000	10000	2000	1000	8000	6000	20000	20000	2400	3500	19980	1650	100000	244530		
	54	Moirabari	30000	10000	10000	10000	2000	1000	8000	6000	20000	20000	2400	3500	19980	1650	100000	244530		
Nal bari	55	S.M.K Civil	30000	10000	10000	10000	2000	1000	8000	6000	20000	20000	2400	3500	19980	1650	100000	244530	733590	
	56	Tihu Fru	30000	10000	10000	10000	2000	1000	8000	6000	20000	20000	2400	3500	19980	1650	100000	244530		
	57	Belsor Model	30000	10000	10000	10000	2000	1000	8000	6000	20000	20000	2400	3500	19980	1650	100000	244530		
Nag aon	58	Nagaon BPCH	30000	10000	10000	10000	2000	1000	8000	6000	20000	20000	2400	3500	19980	1650	100000	244530	978120	
	59	Kampur FRU	30000	10000	10000	10000	2000	1000	8000	6000	20000	20000	2400	3500	19980	1650	100000	244530		
	60	Rupohi Model	30000	10000	10000	10000	2000	1000	8000	6000	20000	20000	2400	3500	19980	1650	100000	244530		
	61	Dhing FRU	30000	10000	10000	10000	2000	1000	8000	6000	20000	20000	2400	3500	19980	1650	100000	244530		
Hoj ai	62	Hojai FRU	30000	10000	10000	10000	2000	1000	8000	6000	20000	20000	2400	3500	19980	1650	100000	244530	244530	
Sivs agar	63	Sivsagar DH	30000	10000	10000	10000	2000	1000	8000	6000	20000	20000	2400	3500	19980	1650	100000	244530	489060	
	64	Amuguri CHC	30000	10000	10000	10000	2000	1000	8000	6000	20000	20000	2400	3500	19980	1650	100000	244530		
Cha raid ew	65	Sapekheti Model	30000	10000	10000	10000	2000	1000	8000	6000	20000	20000	2400	3500	19980	1650	100000	244530	244530	
Soni tpur	66	Kanallata Civil	30000	10000	10000	10000	2000	1000	8000	6000	20000	20000	2400	3500	19980	1650	100000	244530	489060	
	67	Dhekiajuli CHC	30000	10000	10000	10000	2000	1000	8000	6000	20000	20000	2400	3500	19980	1650	100000	244530		
Bis wan ath Cha riali	68	Biswanath Chariali SDCH	30000	10000	10000	10000	2000	1000	8000	6000	20000	20000	2400	3500	19980	1650	100000	244530	489060	
	69	Gohpur CHC	30000	10000	10000	10000	2000	1000	8000	6000	20000	20000	2400	3500	19980	1650	100000	244530		
Uda lgur i	70	Udalguri DH	30000	10000	10000	10000	2000	1000	8000	6000	20000	20000	2400	3500	19980	1650	100000	244530	244530	
	71	Rowta Model	30000	10000	10000	10000	2000	1000	8000	6000	20000	20000	2400	3500	19980	1650	100000	244530	244530	
<b>Total</b>																			<b>173616</b>	<b>30</b>







**Activity no 7d**

**FMR Code: 13.1.2** (Total Approvals = Rs 45.78 Lakhs)

	Unit	Level of Activity	Unit cost in Rs Lakhs	Approved budget in Rs Lakhs
State Quality assessment cum Mentoring visit	10 visits	State	0.69 L	6.9 L
District Quality Assessment cum mentoring Visits	27 districts	District	1.44 L	38.88 L
TOTAL (In Lakhs)				45.78 L

**Activity no 7 d (i)**

**FMR Owner & Responsible Person:** At State HQ:State Consultant, QA

**Level of the Activity:** State level

**Name of the activity:** State Quality Assessment cum mentoring Visits.

**Type of the activity:** Ongoing activity

**About the activity:** Budget of Rs6.9 Lakhs approved for State Quality assessment and mentoring visits will be conducted periodically for hand holding support to the districts and overall assessment of quality assurance activities. Districts making good progress in QA activities will be prioritized. (To be kept at State HQ)

**Activity no 7 d (ii)**

**FMR Owner & Responsible Person:** At District:DPM/DQC/ HA

**Level of the Activity:** District level

**Name of the activity:** District Quality Assessment cum mentoring Visits

**Type of the activity:** Ongoing activity

**About the activity:** Budget of Rs 38.88 Lakhs approvedfor District Quality assessment Cum Mentoring Visits @ Rs 1.178 Lakhs for 33 districts. The District Quality Assessment team (District Quality Consultant, HA (Addl District Quality Consultant) and certified Internal Assessor of the district) have to visit minimum of 5 days per month. TA, DA can be claimed as per NHM norms.

### District Quality assessment Cum Mentoring Visits

S. No.	Budget Head	Budget in Lakhs	Remarks	S. No.	Budget Head	Budget in Lakhs	Remarks
2	District Quality assessment Cum Mentoring Visits			2	District Quality assessment Cum Mentoring Visits		
	Travel support for Monitoring visit	1	Rs.1 lakh for travel support		Travel support for Monitoring visit	1	Rs.1 lakh for travel support
					DA	0.178	Rs.0.178 Lakhs for DA as per NHM norms
<b>Total for 1 district for 1 year</b>					<b>1.178</b>		

NQAS assessment is to be conducted at 10 facilities of each District. Internal Assessors of District will do the Assessment. The visit plan is to be communicated to the facility in charge in advance. Assessors of the district will assess the facility and share their finding to Nodal officer of Quality in the District. Nodal officer will share it to State HQ.

#### Assessment Protocol

1. Observation
2. Staff Interview
3. Record Review
4. Patient Interview

<u>Assessment</u>	<u>Assessor</u>	<u>Department</u>
-------------------	-----------------	-------------------

Clinical Process	Doctor	OPD,IPD, OT, Blood bank, Labour Room, Medical Records, NHP, Clinical outcome, Medical & Death Audit
Nursing Process	Clinical Staff	Nursing procedure, Laboratories, Infection Control, BMW, Pharmacy, Ambulance
Management Support and Process	Hospital Administrator	Facility Management, Support Services, Patient Feedback, Disaster management, Hospital data and performance, Outsourcing

### Role and Responsibility of Assessor

1. The assessor would be responsible for ensuring that all relevant standard and criteria are assessed adequately during survey and producing final assessment report to accurately reflect the findings within the agreed timelines
2. They are expected to conduct closing and opening meeting in the facility. After completion of assessment they are required to prepare the gap and submit the report.
3. Role of the assessor will be supportive supervision of the facility.
4. The assessors would facilitate development of 'gap-closure' plan at the facility level through a consultative process.

State and District wise fund break up under FMR 13.1.2			
Sl.No	District	Physical Target	Total allocation in Rs
1	Baksa	100 visits per year	117800.00
2	Barpeta	100 visits per year	117800.00
3	Bongaigaon	100 visits per year	117800.00
4	Cachar	100 visits per year	117800.00
5	Chirang	100 visits per year	117800.00
6	Darrang	100 visits per year	117800.00
7	Dhemaji	100 visits per year	117800.00
8	Dhubri	100 visits per year	117800.00
9	South Salmara	100 visits per year	117800.00
10	Dibrugarh	100 visits per year	117800.00
11	Dima Hasao	100 visits per year	117800.00

12	Goalpara	100 visits per year	117800.00
13	Golaghat	100 visits per year	117800.00
14	Hailakandi	100 visits per year	117800.00
15	Jorhat	100 visits per year	117800.00
16	Majuli	100 visits per year	117800.00
17	Kamrup Metro	100 visits per year	117800.00
18	Kamrup Rural	100 visits per year	117800.00
19	Karbi Anglong	100 visits per year	117800.00
20	West Karbi anglong	100 visits per year	117800.00
21	Karimganj	100 visits per year	117800.00
22	Kokrajhar	100 visits per year	117800.00
23	Lakhimpur	100 visits per year	117800.00
24	Morigaon	100 visits per year	117800.00
25	Nagaon	100 visits per year	117800.00
26	Hojai	100 visits per year	117800.00
27	Nalbari	100 visits per year	117800.00
28	Charaideo	100 visits per year	117800.00
29	Sivasagar	100 visits per year	117800.00
30	Biswanath	100 visits per year	117800.00
31	Sonitpur	100 visits per year	117800.00
32	Tinsukia	100 visits per year	117800.00
33	Udalguri	100 visits per year	117800.00
<b>District Total (In Rupees)</b>			<b>3888000.00</b>
<b>District Total (In Rupees Lakhs)</b>			<b>38.88 L</b>
<b>State HQ Allocation (In Rupees Lakhs)</b>			<b>6.9L</b>
<b>Total Approved amount (In Rupees Lakhs)</b>			<b>45.78 L</b>

### **Activity No 7e**

**FMR Code: 13.1.3**(Total Approval = Rs 5 Lakhs)

**Level of the Activity:** State level

**Name of the activity:** Quality Assurance Certifications, Re-certification (National & State Certification) under NQAS

**Type of the activity:** Ongoing activity

**About the activity:** A budget of Rs 5 lakhs has been approved for external assessments of facilities under NQAS. **This fund is to be kept at State HQ**

### **Activity No 7f**

**FMR Code: 13.1.4** (Total Approval = Rs 5 Lakhs)

**Level of the Activity:** State level

**Name of the activity:** LaQshya certifications and recertification (National & State Certification) under LaQshya

**Type of the activity:** Ongoing activity

**About the activity:** A budget of Rs 5 lakhs has been approved for external assessments of facilities under LaQshya. **This fund is to be kept at State HQ.**

### **Activity No 7g**

**FMR Code: 13.1.5** (Total Approval = Rs 17.11 Lakhs)

**Level of the Activity:** State level

**Name of the activity:** Incentivisation on attainment of NQAS certification

**Type of the activity:** ongoing activity

**About the activity:**An incentive amount of Rs 17.11 lakhs has been approved for the following three facilities on attainment of NQAS for the second year. **This incentive money shall be utilized in the following way:**

1. 25% of the incentive amount shall be spent on financial incentives for the staff, who have been active participants of the quality assurance programme.
2. Remaining 75% of the fund shall be spent in improving the working condition at the health facility. However such fund would not be spent on those activities for which support from the State's regular budget is available. Few activities could be
  - Strengthening of staff canteen/rest room (eg purchase of microwave/electrical kettle for heating of food for duty staff/ fans/beautification of canteen)
  - Improvement in amenities in duty rooms
  - Lockers for duty staff.
  - Childrens playroom for duty staff's children

- Department wise award/ recognition (non financial) for best grade 4, best cleaner, best staff nurse, Paramedics etc month wise can be displayed in some notice board.
- The facility's Rogi Kalyan Samiti may take a decision on usage of incentive fund

However the quality standards need to be maintained every year since inspection visits by GOI will occur every year. Any facility which is quality certified and loses its quality certificate in the subsequent year would require thorough investigation and root cause analysis by State HQ

Name of the district	Facility Name	Allocated Amount for incentive in Rupees
Tinsukia	Ledo MPHC	300000
Nalbari	Doulasal MPHC	300000
Goalpara	200 bedded Goalpara Civil Hospital	1111000
Total		1711000

State and District wise fund break up under FMR 13.1.5		
Sl.No	District	Total allocation in Rupees
1	Baksa	0
2	Barpeta	0
3	Bongaigaon	0
4	Cachar	0
5	Chirang	0
6	Darrang	0
7	Dhemaji	0
8	Dhubri	0
9	Dibrugarh	0
10	Dima Hasao	0
11	Goalpara	1111000
12	Golaghat	0
13	Hailakandi	0
14	Jorhat	0
15	Kamrup Metro	0

16	Kamrup Rural	0
17	Karbi Anglong	0
18	Karimganj	0
19	Kokrajhar	0
20	Lakhimpur	0
21	Morigaon	0
22	Nagaon	0
23	Nalbari	300000
24	Sivasagar	0
25	Sonitpur	0
26	Tinsukia	300000
27	Udalguri	0
<b>District Total (In Rupees)</b>		<b>1711000.00</b>
<b>District Total (In Rupees Lakhs)</b>		<b>17.11 L</b>
<b>State HQ Allocation (In Rupees Lakhs)</b>		<b>0</b>
<b>Total Approved amount (In Rupees Lakhs)</b>		<b>17.11 L</b>

## Kayakalp



### Activity No 8

**FMR Code: 13.2** (Total Approvals = Rs 945.90 Lakhs)

Activity No	FMR code	Particulars	Level of activity	Approved Budget
8 a	13.2.1	a) Assessments	State and District	91.40 L
8 b	13.2.2	b) Kayakalp Awards	State	434.50 L
8 c	13.2.3	c) Support for implementation of Kayakalp	State and District	401.68 L
8 d	13.2.4	d) Contingencies	State	3.3 L
8 e	13.2.5	e) SwachhSwasthSarvatra	District	0
8 f	13.2.6	f) Any other (please specify)	State and District	41.67 L
		<b>TOTAL</b>		945.90 L

### Objectives of Kayakalp

- To promote cleanliness, hygiene and Infection Control Practices
- To incentivize public healthcare facilities that show exemplary performance in cleanliness and infection control.
- To inculcate a culture of ongoing assessment to sustain the same.

To promote cleanliness, hygiene and Infection Control Practices in Health Care Facilities, incentivize and recognize such public healthcare facilities that show exemplary performance in adhering to standard protocols, the Kayakalp award is being given. As observed in last FY though few facilities could achieve this Kayakalp certification and none could achieve NQAS.

Therefore based on the scores and gaps of the facilities every district will select almost all Health care facilities (DH compulsory) in each district which will be taken up for Kayakalp internal assessment. Preference may be given to MCH wings, Model Hospitals and previous Kayakalp certified facilities so that certification can be achieved. All CHCs in the ODF block as per the list attached has to be made compulsory 70% in Kayakalp Program in the external assessment. More facilities should come up in FY 2020-21



**Activity no 8 a**

**FMR code 13.2.1 (Total Approvals = Rs 91.40 Lakhs)**

**FMR Owner & Responsible Person: At State HQ: State Consultant, Quality Assurance**

**At District: DPMs/DQC/HA/DAM**

**Level of the Activity:** State level and district level

**Name of the activity:** Assessments

**Type of the activity:** Ongoing activity

**About the activity:**

**Kayakalp Internal, Peer and External assessment of HWCs should be done utilizing the assessment funds of PHCs.**

**The DPM, District Quality Consultant (DQC), HA and District Urban Health Coordinator will be responsible for achieving the certification.** The Internal Assessors of the respective districts will be utilized for gap assessment. Performance Appraisal of DPM, DQC, HA, DUHC and BPM will be based on the certifications achieved in the district for FY 2021-22.

Internal Assessors of District will do the Assessment. The visit plan is to be communicated to the facility in charge in advance. Assessors of the district will assess the facility and share their finding to Nodal officer of Quality in the District. Nodal officer will share it to SHQ. TA will be borne by District from program management fund.

**Table 1 (8a) Internal assessment for Health Institutions**

	District	DH	Unit Cost for DH	Total cost for assessment of DH (In Rupees)	No of SDC H/C HC to be assessed	Unit Cost for SDCH /CHC	Total cost for assessment of SDCH	No of PHC to be Assessed	Total Cost (Unit cost per PHC Rs 500 X No of facilities)	Total cost for Internal Assessment
1	Baksa	1	2000	2000	5	1000	5000	21	10500	17500
2	Barpeta	1	2000	2000	9	1000	9000	28	14000	25000
3	Bongaigaon	1	2000	2000	4	1000	4000	18	9000	15000
4	Cachar	1	2000	2000	4	1000	4000	20	10000	16000
5	Chirang	1	2000	2000	3	1000	3000	12	6000	11000
6	Darrang	1	2000	2000	7	1000	7000	15	7500	16500

7	Dhemaji	1	2000	2000	4	1000	4000	11	5500	11500
8	Dhubri	1	2000	2000	5	1000	5000	20	10000	17000
9	South Salmara	0	2000	0	1	1000	1000	5	2500	3500
10	Dibrugarh	0	2000	0	8	1000	8000	14	7000	15000
11	Dima Hasao	1	2000	2000	2	1000	2000	7	3500	7500
12	Goalpara	1	2000	2000	5	1000	5000	21	10500	17500
13	Golaghat	1	2000	2000	4	1000	4000	20	10000	16000
14	Hailakandi	1	2000	2000	3	1000	3000	8	4000	9000
15	Majuli	0	2000	0	1	1000	1000	6	3000	4000
16	Jorhat	0	2000	0	5	1000	5000	20	10000	15000
17	Kamrup Metro	1	2000	2000	3	1000	3000	15	7500	12500
18	Kamrup Rural	1	2000	2000	12	1000	12000	36	18000	32000
19	West Karbi anglong	0	2000	0	1	1000	1000	6	3000	4000
20	Karbi Anglong	1	2000	2000	4	1000	4000	20	10000	16000
21	Karimganj	1	2000	2000	7	1000	7000	16	8000	17000
22	Kokrajhar	1	2000	2000	2	1000	2000	23	11500	15500
23	Lakhimpur	1	2000	2000	8	1000	8000	16	8000	18000
24	Morigaon	1	2000	2000	5	1000	5000	18	9000	16000
25	Hojai	0	2000	0	1	1000	1000	10	5000	6000
26	Nagaon	1	2000	2000	17	1000	17000	40	20000	39000
27	Nalbari	1	2000	2000	11	1000	11000	24	12000	25000
28	Charaideo	0	2000	0	3	1000	3000	10	5000	8000
29	Sivasagar	1	2000	2000	4	1000	4000	22	11000	17000
30	Bishwanath	0	2000	0	2	1000	2000	5	2500	4500
31	Sonitpur	1	2000	2000	7	1000	7000	26	13000	22000
32	Tinsukia	1	2000	2000	9	1000	9000	12	6000	17000
33	Udalguri	1	2000	2000	5	1000	5000	13	6500	13500
<b>Total</b>				<b>50000</b>		<b>33000</b>	<b>171000</b>		<b>279000</b>	<b>500000</b>

**TABLE 2 (8a) : Peer assessment for Health Institutions**

Sl No	District	DH	Unit Cost for DH	Total cost for assessment of DH (In Rupees)	Estimated No of SDCH/CHC to be assessed	Unit Cost for assessment of SDCH/CHC	Total cost for assessment SDCH	Estimated No of PHC to be Assessed	Total Cost (Unit cost per PHC Rs 5000 X No of facilities)	Total cost for peer Assessment
1	Baksa	1	25000	25000	3	13000	39000	15	75000	139000
2	Barpeta	1	25000	25000	7	13000	91000	15	75000	191000
3	Bonga	1	25000	25000	4	13000	52000	15	75000	152000
4	Cachar	1	25000	25000	4	13000	52000	12	60000	137000
5	Chirang	1	25000	25000	3	13000	39000	12	60000	124000
6	Darrang	1	25000	25000	5	13000	65000	13	65000	155000
7	Dhemaji	1	25000	25000	4	13000	52000	9	45000	122000
8	South Salmara	0	25000	0	1	13000	13000	3	15000	28000
9	Dhubri	1	25000	25000	4	13000	52000	11	55000	132000
10	Dibrugarh	0	0	0	6	13000	78000	8	40000	118000
11	Dima Hasao	1	25000	25000	2	13000	26000	5	25000	76000
12	Goalpara	1	25000	25000	5	13000	65000	11	55000	145000
13	Golaghat	1	25000	25000	3	13000	39000	14	70000	134000
14	Hailakandi	1	25000	25000	3	13000	39000	7	35000	99000
15	Majuli	0	25000	0	1	13000	13000	3	15000	28000
16	Jorhat	0	0	0	5	13000	65000	17	85000	150000
17	Kamrup Metro	1	25000	25000	3	13000	39000	12	60000	124000
18	Kamrup Rural	1	25000	25000	9	13000	117000	19	95000	237000
19	West Karbi Anglong	0	25000	0	0	13000	0	4	20000	20000
20	Karbi Anglong	1	25000	25000	4	13000	52000	14	70000	147000
21	Karimganj	1	25000	25000	7	13000	91000	14	70000	186000
22	Kokrajhar	1	25000	25000	2	13000	26000	15	75000	126000
23	Lakhimpur	1	25000	25000	6	13000	78000	16	80000	183000
24	Morigaon	1	25000	25000	5	13000	65000	14	70000	160000
25	Hojai	0	25000	0	1	13000	13000	8	40000	53000
26	Nagaon	1	25000	25000	8	13000	104000	24	120000	249000
27	Nalbari	1	25000	25000	8	13000	104000	18	90000	219000
28	Charaideo	0	25000	0	2	13000	26000	8	40000	66000

29	Sivasagar	1	25000	25000	4	13000	52000	16	80000	157000
30	Bishwanath	0	25000	0	0	13000	0	4	20000	20000
31	Sonitpur	1	25000	25000	8	13000	104000	16	80000	209000
32	Tinsukia	1	25000	25000	6	13000	78000	8	40000	143000
33	Udalguri	1	25000	25000	3	13000	39000	9	45000	109000
	<b>Total</b>			<b>625000</b>	<b>136</b>	<b>429000</b>	<b>1768000</b>	<b>389</b>	<b>1945000</b>	<b>4338000</b>

**Unit cost of Rs 25000 per DH will include TA/Vehicle to be arranged for assessor/ Honorarium of Rs 500 per assessor per facility/ DA/ printing of checklists**

**Unit cost of Rs 13000 per DH will include TA/Vehicle to arranged for assessor/ Honorarium of Rs 500 per assessor per facility/ DA/ printing of checklists**

**Unit cost of Rs 5000 per PHC will include TA/Vehicle to be arranged for assessor/ Honorarium of Rs 500 per assessor per facility/ DA/ printing of checklists**

<b>State and District wise fund break up under FMR 13.2.1</b>		
Sl.No	District	Total allocation in Rupees
2	Barpeta	216000
3	Bongaigaon	167000
4	Cachar	153000
5	Chirang	135000
6	Darrang	171500
7	Dhemaji	133500
8	Dhubri	149000
9	South Salmara	31500
10	Dibrugarh	133000
11	Dima Hasao	83500
12	Goalpara	162500
13	Golaghat	150000
14	Hailakandi	108000
15	Majuli	32000
16	Jorhat	165000
17	Kamrup Metro	136500
18	Kamrup Rural	269000
19	West Karbi anglong	24000
20	Karbi Anglong	163000
21	Karimganj	203000
22	Kokrajhar	141500
23	Lakhimpur	201000
24	Morigaon	176000
25	Hojai	59000

26	Nagaon	288000
27	Nalbari	244000
28	Charaideo	74000
29	Sivasagar	174000
30	Bishwanath	24500
31	Sonitpur	231000
32	Tinsukia	160000
33	Udalguri	122500
<b>Total</b>		<b>4681500</b>

### **Activity No 8 b**

**FMR code 13.2.2 (Total Approval = Rs434.50 Lakhs)**

**FMR Owner & Responsible Person: At State HQ: State Consultant, Quality Assurance**

**Level of the Activity: State level**

**Name of the activity: Kayakalp Awards**

**Type of the activity: Ongoing activity**

**About the activity:**

- 1) Budget of Rs 50 L approved for Award Money for 1 Best District Hospital
- 2) Budget of Rs 20 L approved for 1 Runner Up District Hospital
- 3) Budget of Rs 15 L Approved for Best SDH/CHC
- 4) Budget of Rs 10 L Approved for Runner up SDH/CHC
- 5) Budget of Rs 66 L Approved for Best PHC of District @ Rs 2 Lakh per District (33)
- 6) Budget of Rs 69 L is approved for commendation award for 23 DH @ Rs 3 Lakh per DH
- 7) Budget of Rs 80 L is approved for commendation award for 80 SDH/CHC @ Rs 1 Lakh per facility.
- 8) Budget of Rs 75 L is approved for commendation award for 150 PHC @ Rs 0.50 Lakh per PHC
- 9) Budget of Rs 33 L is approved for best HWC@ Rs 1.0 Lakh for 33 districts
- 10) Budget of Rs 16.50 L is approved for commendation of HWC-SC for 66 HWC @) 0.25L

**This fund will be kept at State HQ**

### **Activity No 8c**

**FMR code 13.2.3.1(Total proposal = Rs 35.28 Lakhs)**

**Level of the Activity:** State level

**Name of the activity:** Biomedical Waste Management

**Type of the activity:** Ongoing activity

**About the activity:** A budget of Rs 35.28 lakhs is approved for CBMWTF.

The district whoever is paying the common treatment facility (CTF) which is approved by Assam Pollution Control Board may request the State QA cell through a letter by Jt DHS requesting for fund release. The fund will however be released only after approval by Higher authority.

District	Total amount Required for the year (In Rupees)	Rate per month
Nagaon	480000	40000 per month
Kamrup M	378000	31500 per month
Kamrup R	480000	40000 per month
Morigaon	504000	42000 per month
Sivasagar	486000	40500 per month
Baksa	600000	50000 per month
Nalbari	600000	50000 per month
<b>Total</b>	<b>3528000</b>	

#### **Activity No 8d**

**FMR code 13.2.3.2** (Total approval- Rs 46.40 Lakhs)

**Level of the Activity:** State level

**Name of the activity:** Consumables & PPE

**Type of the activity:** Ongoing activity

**About the activity:** Budget of Rs 46.40 L is approved for Biomedical Bags (Yellow and red bags) for facility level. **This fund will be kept at State HQ.**

**FMR code 13.2.3.3** (Budget proposal = Rs170.0 Lakhs)

**Name of the activity:** Liquid Waste Treatment & Disposal

**Type of the activity:** New activity

**About the activity:** Budget of Rs 170.00 lakhs has been approved for ETP of 10 DHs.

#### **Activity No 8 e**

**FMR code 13.2.3.4** (Total Approval = Rs 150.00 Lakhs)

**FMR Owner & Responsible Person:**DPM/DQC/HA

**Level of the Activity:** District level

**Name of the activity:** Any other (please specify)

**Type of the activity:** Ongoing activity

**About the activity:** Following activities have to be completed for Support for Implementation of Kayakalp.

**Kayakalp fund may be utilized for the following activities**

- 1. Hospital Upkeep**(Infrastructure Maintenance, Hospital/Facility Appearance, Maintenance of Open Areas ,Landscaping and Gardening ,Pest and Animal Control , Illumination and Lighting in Hospital, Maintenance of Furniture and Fixtures, Removal of Hospital Junks Water Conservation Work Place Management ---
- 2. Sanitation Hygiene** (General Approach to Environmental Cleaning, Material and Equipment for Cleaning, Standard Method of Cleaning, Monitoring of Cleanliness Activities, Drainage and Sewage Management)
- 3. Waste Management**(Implementation Of Bio Medical Waste Rules, 2016 & 2018 (Amendment), Storage of Bio Medical Waste, Disposal of Bio Medical Waste, Post Exposure Prophylaxis (PEP), Post Exposure Prophylaxis (PEP), Liquid Waste Management
- 4. Infection Control :** (Standard and Additional Precautions, Spill Management kit, Environment Control,
- 5. Hospital Support Service :** Laundry Services and Linen Management, Water Sanitation, Kitchen Services,
- 6. Hygiene Promotion :** Community Monitoring and Patient Participation , Information, Education and Communication,Leadership and Teamwork



**(If the fund provided falls short, RKS fund to be utilized)**

**Note :District Quality Assurance committees, DPM,District Quality Consultant, Hospital Administrator, BPM under National Health Mission will support the facilities in closing such gaps and enable the facility to achieve a score of at least 70% in Kayakap External Assessment.Facilities which not achieve more that 70% will not be granted untied funds for next year.**





OFFICE OF THE MISSION DIRECTOR  
NATIONAL HEALTH MISSION, ASSAM

Saikia Commercial Complex, Sri Nagar Path, Near Post office Bus Stand, G. S. Road, Christianbasti, Guwahati - 781005  
Website: <https://nhm.assam.gov.in> :: Phone No: 0361-2340236/39 :: Email Id: mdrhmasm@gmail.com

Annexure B

**Guidelines for utilization of Kayakalp Award money**

Sl No	Activities which can be undertaken
1	Toilet repair and flush in all toilets
2	Elbow taps in all patient care areas if not done earlier
3	All rusted furniture can be painted
4	Separate linen carrying trolley (one for dirty, one for clean)
5	Soft music system in the wards
6	Minor repair and renovation
7	Drinking water facility for patients
8	Safe drinking water facility outside the health facility
9	Adequate illumination in surrounding area
10	Adequate illumination in Circulation Area
11	Adequate illumination in front of hospital and access road
12	Use of energy efficient bulbs
13	Window and doors are maintained
14	Furniture at the nursing station, staff room, administrative office are maintained
15	Sinks and Cistern are cleaned
16	Availability of deep Sinks and running water at point of use
17	Availability of Buckets/mops and carts for Mopping
18	Closed drainage system
19	Needle cutters for cutting the syringe hub
20	Dedicated Storage facility is available for biomedical waste and its has biohazard symbol displayed
21	Disinfectant solution like Glutaraldehyde/ D125
22	Compost Pit within the premises
23	Sullage is to be managed scientifically
24	Pest control measures
25	Availability of Chemical and biological indicators
26	Availability of PPE (cap, mask, gloves, boots, goggles)
27	Availability of Alcohol Based hand rub
28	Beautification of surroundings
29	IEC regarding importance of maintaining hand hygiene is displayed in hospital premises
30	IEC regarding use of toilets is displayed within hospital premises
31	Availability of bins for general recyclable and biodegradable wastes
32	Gambusia (mosquito fish) in ponds and other water bodies.
33	Regular Cleaning of drains
34	Repairs and maintenance of roads, footpaths and pavements
35	The Kitchen has provision to store dry ration and fresh ration separately.
36	The Kitchen is smoke-free and fly-proofed

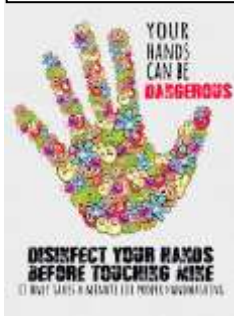
*Kalika*

*Anwar*



Three Bucket System

Hospital Upkeep



Hygiene Promotion



Biomedical Trolley

Sl no.	District	Name of the Facility	Facility Type	Allocated fund under <u>13.2.3.4</u>	District funds
1	Baksa	Barama Model Hospital	Model Hospital	50000	600000
2	Baksa	Jalah CHC	CHC	50000	
3	Baksa	Goreswar CHC	CHC	50000	
4	Baksa	Tamulpur CHC	CHC	50000	
5	Baksa	Nimua MPHC	PHC	50000	
6	Baksa	Pamuapathar SHC	PHC	50000	
7	Baksa	Subankhata SD	PHC	50000	
8	Baksa	Thamna MPHC	PHC	50000	
9	Baksa	Dwarkuchi SD	PHC	50000	
10	Baksa	Nizkaurbaha BPHC	PHC	50000	

11	Baksa	Nikashi SD	PHC	50000	
12	Baksa	Sarumanikpur SD	PHC	50000	
13	Barpeta	Bhulukadoba CHC	CHC	50000	600000
14	Barpeta	Mandia Model Hospital	CHC	50000	
15	Barpeta	Howly CHC	CHC	50000	
16	Barpeta	Sarukhetri CHC	CHC	50000	
17	Barpeta	Baghmara CHC	CHC	50000	
18	Barpeta	Majaon CHC	CHC	50000	
19	Barpeta	Sorbhog CHC	CHC	50000	
20	Barpeta	Byaskuchi SD	PHC	50000	
21	Barpeta	Patacharkuchi MPHC	PHC	50000	
22	Barpeta	Nityanana	PHC	50000	
23	Barpeta	Garemari PHC	PHC	50000	
24	Barpeta	Chenga BPHC	PHC	50000	
25	Bongaigaon	Bongaigaon DH	PHC	50000	550000
26	Bongaigaon	Abhyapuri	CHC	50000	
27	Bongaigaon	Boitamari	CHC	50000	
28	Bongaigaon	Manikpur	CHC	50000	
29	Bongaigaon	Chalantapara MPHC	PHC	50000	
30	Bongaigaon	Dhantola MPHC	PHC	50000	
31	Bongaigaon	Chaparakata MPHC	PHC	50000	
32	Bongaigaon	Bishnupur SD	PHC	50000	
33	Bongaigaon	Mererchar PHC	PHC	50000	
34	Bongaigaon	NORTH SALMARA SD	PHC	50000	
35	Bongaigaon	PACHANIA MPHC	PHC	50000	
36	Cachar	S M Dev Civil Hospital	DH	50000	600000
37	Cachar	Mahatma Gandhi Model Hospital, Chotodudhpatil	CHC	50000	
38	Cachar	Kacchudharam Model Hospital	CHC	50000	
39	Cachar	JIRIGHAT	PHC	50000	
40	Cachar	SONABARIGHAT PHC	PHC	50000	
41	Cachar	Fulbari	PHC	50000	
42	Cachar	Gonirgram	PHC	50000	
43	Cachar	Jalalpur	PHC	50000	
44	Cachar	BASKANDI	PHC	50000	
45	Cachar	Thaligram BPHC	PHC	50000	
46	Cachar	Udharbond BPHC	PHC	50000	
47	Cachar	Harinagar BPHC	PHC	50000	
48	Chirang	Chirang DH	DH	50000	400000
49	Chirang	Bhetagaon CHC	CHC	50000	
50	Chirang	Bengtol CHC	CHC	50000	
51	Chirang	MG Model Hospital,	CHC	50000	

		Subhajibhar				
52	Chirang	AMGURI SD	PHC	50000		
53	Chirang	AMTEKA MPHC	PHC	50000		
54	Chirang	BALLAMGURI BPHC	PHC	50000		
55	Chirang	BIJNI SD	PHC	50000		
56	Darrang	Mangaldai Civil Hospital	DH	50000	600000	
57	Darrang	Bazanapathar	CHC	50000		
58	Darrang	Kharupetia CHC	CHC	50000		
59	Darrang	Sipajhar	CHC	50000		
60	Darrang	Kuwariphukhuri	Model Hospital	50000		
61	Darrang	Goshaigaon MPHC	PHC	50000		
62	Darrang	Jaljali BPHC	PHC	50000		
63	Darrang	Barampur NEW PHC	PHC	50000		
64	Darrang	Silbori NEW PHC	PHC	50000		
65	Darrang	Dumunichoki	PHC	50000		
66	Darrang	Baruajhar SD	PHC	50000		
67	Darrang	Chamuapara MPHC	PHC	50000		
68	Dhemaji	Dhemaji DH	DH	50000		200000
69	Dhemaji	Bengenagarh CHC	CHC	50000		
70	Dhemaji	Telam MPHC	PHC	50000		
71	Dhemaji	Bordoloni MPHC	PHC	50000		
72	Dhubri	Dhubri Civil Hospital	PHC	50000	500000	
73	Dhubri	Agomani CHC	CHC	50000		
74	Dhubri	Bogribari Model	CHC	50000		
75	Dhubri	Halakura CHC	CHC	50000		
76	Dhubri	Geramari MPHC	PHC	50000		
77	Dhubri	Gazarikandi BPHC	PHC	50000		
78	Dhubri	Raniganj PHC	PHC	50000		
79	Dhubri	Berbhangi SD	PHC	50000		
80	Dhubri	Salkocha SHC	PHC	50000		
81	Dhubri	Puthimari	PHC	50000		
82	South Salmara	South Salmara PHC	PHC	50000	100000	
83	South Salmara	Hathsingimari SDCH	CHC	50000		
84	Dibrugarh	Moran Tiloi CHC	CHC	50000	400000	
85	Dibrugarh	Sasoni CHC	CHC	50000		
86	Dibrugarh	Naharani CHC	Model Hospital	50000		
87	Dibrugarh	Chabua Model Hospital	CHC	50000		
88	Dibrugarh	Lezai Kolakhowa Model Hospital	CHC	50000		
89	Dibrugarh	Kalakhowa	PHC	50000		
90	Dibrugarh	Tingkhong MPHC	PHC	50000		
91	Dibrugarh	Namrup MPHC	PHC	50000		
92	Dima Hasao	Langting BPHC	PHC	50000		100000

93	Dima Hasao	Boroarkap SHC	PHC	50000	600000
94	Goalpara	Matia Model	CHC	50000	
95	Goalpara	Bikali Model Hospital	CHC	50000	
96	Goalpara	Ambari Bazar CHC	CHC	50000	
97	Goalpara	Dhudhnoi CHC	CHC	50000	
98	Goalpara	Rangjuli PHC	PHC	50000	
99	Goalpara	Agia PHC	PHC	50000	
100	Goalpara	Bordhamal SD	PHC	50000	
101	Goalpara	Joypur MPHC	PHC	50000	
102	Goalpara	Kharmuja MPHC	PHC	50000	
103	Goalpara	Joleswar SHC	PHC	50000	
104	Goalpara	Simoli Tola SHC	PHC	50000	
105	Goalpara	Badahpur SD	PHC	50000	
106	Golaghat	SKK CH , Golaghat	DH	50000	600000
107	Golaghat	Bokakhat SDCH	SDCHC	50000	
108	Golaghat	Merapani CHC	CHC	50000	
109	Golaghat	Dergaon CHC	CHC	50000	
110	Golaghat	Charingia CHC	CHC	50000	
111	Golaghat	Kamargaon MPHC	PHC	50000	
112	Golaghat	Mohuramukh MPHC	PHC	50000	
113	Golaghat	Kachomari SD	PHC	50000	
114	Golaghat	Morangi MPHC	PHC	50000	
115	Golaghat	Borpothar MPHC	PHC	50000	
116	Golaghat	Nogura MPHC	PHC	50000	
117	Golaghat	Kohora SD	PHC	50000	
118	Hailakandi	Hailakandi DH		50000	350000
119	Hailakandi	Dholai	Model Hospital	50000	
120	Hailakandi	Algapur	CHC	50000	
121	Hailakandi	Chiporsangan NPHC	PHC	50000	
122	Hailakandi	North Narainpur NPHC	PHC	50000	
123	Hailakandi	Matijuri SHC	PHC	50000	
124	Hailakandi	Kalinagar PHC	PHC	50000	
125	Majuli	Gormur SDCH	CHC	50000	100000
126	Majuli	Ratanpur miri	PHC	50000	
127	Jorhat	Bhogamukh Model	Model Hospital	50000	600000
128	Jorhat	Naborchuk Model Hospital	Model Hospital	50000	
129	Jorhat	Mariani CHC (Nagajanka)	CHC	50000	
130	Jorhat	Teok CHC	CHC	50000	
131	Jorhat	Pokamura	PHC	50000	
132	Jorhat	Chungi Kohar Model Hospital	CHC	50000	
133	Jorhat	Bogamukh MPHC	PHC	50000	
134	Jorhat	Maraini MPHC	PHC	50000	

135	Jorhat	Kakojan BPHC	PHC	50000	
136	Jorhat	Jengraimukh MPHC	PHC	50000	
137	Jorhat	Solmora PHC	PHC	50000	
138	Jorhat	Selenghat MPHC	PHC	50000	
139	Kamrup M	Pandu FRU	CHC	50000	450000
140	Kamrup M	Khetri CHC	CHC	50000	
141	Kamrup M	CAPITAL SD	PHC	50000	
142	Kamrup M	Odalbakra SD	PHC	50000	
143	Kamrup M	EAST GUWAHATI SD	PHC	50000	
144	Kamrup M	NOTBOMA PHC	PHC	50000	
145	Kamrup M	MALOIBARI MPHC	PHC	50000	
146	Kamrup M	DIMORIA SD	PHC	50000	
147	Kamrup M	HAHARA MPHC	PHC	50000	
148	KAMRUP R	TRBH	Model Hospital	50000	
149	KAMRUP R	Boko BPHC/CHC/FRU		50000	
150	KAMRUP R	Hajo BPHC/CHC/FRU	CHC	50000	
151	KAMRUP R	Kamalpur BPHC/CHC	CHC	50000	
152	KAMRUP R	Rangia Model Hospital	CHC	50000	
153	KAMRUP R	Mirza CHC	CHC	50000	
154	KAMRUP R	Azara CHC	CHC	50000	
155	KAMRUP R	Goroimari CHC	CHC	50000	
156	KAMRUP R	Moinakhurung Model Hospital	CHC	50000	
157	KAMRUP R	Dihina MPHC	PHC	50000	
158	KAMRUP R	Nagarbera BPHC	PHC	50000	
159	KAMRUP R	Athiaboi Banmaja MPHC	PHC	50000	
160	KAMRUP R	Bihdia PHC	PHC	50000	
161	KAMRUP R	Phulung MPHC	PHC	50000	
162	Karbi Anglong	Donkamokam CHC	CHC	50000	550000
163	Karbi Anglong	Howraghat CHC	CHC	50000	
164	Karbi Anglong	Balijuri	CHC	50000	
165	Karbi Anglong	Bokajan CHC	CHC	50000	
166	Karbi Anglong	Donkamokam CHC	CHC	50000	
167	Karbi Anglong	Deihori SD (MODEL HOSPITAL)	CHC	50000	
168	Karbi Anglong	Dhansiri	PHC	50000	
169	Karbi Anglong	Manja	PHC	50000	
170	Karbi Anglong	Phuloni MPHC	PHC	50000	
171	Karbi Anglong	RAJAPATHAR	PHC	50000	
172	Karbi Anglong	Samaguri SD	PHC	50000	
173	West Karbi Anglong	Hamren SDCH	CHC	50000	50000
174	Karimganj	Karimganj DH	DH	50000	550000

175	Karimganj	Srigauri CHC	CHC	50000		
176	Karimganj	Patharkandi CHC	CHC	50000		
177	Karimganj	MG Model Hospital Baroigram	Model Hospital	50000		
178	Karimganj	MG Model Hospital Dullavcherra	Model Hospital	50000		
179	Karimganj	Nilambazar PHC	PHC	50000		
180	Karimganj	Lakhipur PHC	PHC	50000		
181	Karimganj	Badarpur SHC	PHC	50000		
182	Karimganj	Bhanga SD	PHC	50000		
183	Karimganj	R. K. Nagar PHC	PHC	50000		
184	Karimganj	Nivia PHC	PHC	50000		
185	Kokrajhar	Kokrajhar DH	DH	50000		650000
186	Kokrajhar	Balajan CHC	CHC	50000		
187	Kokrajhar	Dotma CHC	CHC	50000		
188	Kokrajhar	Kachugaon CHC	CHC	50000		
189	Kokrajhar	Bashbari CHC	CHC	50000		
190	Kokrajhar	Salakati SD	PHC	50000		
191	Kokrajhar	Simbargaon SD	PHC	50000		
192	Kokrajhar	Sukanjhora SD	PHC	50000		
193	Kokrajhar	Patgaon SD	PHC	50000		
194	Kokrajhar	Kamalsing SHC	PHC	50000		
195	Kokrajhar	Bangaldoba PHC	PHC	50000		
196	Kokrajhar	Harinaguri MPHC	PHC	50000		
197	Kokrajhar	Kalipukhuri MPHC	PHC	50000		
198	Lakhimpur	Lakhimpur District Hospital	DH	50000	500000	
199	Lakhimpur	DHALPUR CHC	CHC	50000		
200	Lakhimpur	BIHPURIA CHC	CHC	50000		
201	Lakhimpur	BONGALMORA CHC	CHC	50000		
202	Lakhimpur	NAWBOICHA CHC	CHC	50000		
203	Lakhimpur	GHILAMORA CHC	CHC	50000		
204	Lakhimpur	Panigaon SHC	PHC	50000		
205	Lakhimpur	Phulbari 10 Bedded New PHC	PHC	50000		
206	Lakhimpur	Jengrai Singimari RPHC	PHC	50000		
207	Lakhimpur	Harmotty MPHC	PHC	50000		
208	Morigaon	Morigaon DH	DH	50000	450000	
209	Morigaon	Dolonghat CHC	CHC	50000		
210	Morigaon	Bhurbandha Model Hospital	CHC	50000		
211	Morigaon	Baidyabori SHC	Model Hospital	50000		
212	Morigaon	Borghat M.PHC	Model Hospital	50000		
213	Morigaon	Mikirbheta SD	PHC	50000		
214	Morigaon	Monipurtup PHC	PHC	50000		

215	Morigaon	Simaluguri SD	PHC	50000	
216	Morigaon	Burgaon MPHC	PHC	50000	
217	Nagaon	BPCH Nagaon	DH	50000	650000
218	Nagaon	Nagaon MCH	MCH	50000	
219	Nagaon	Jakhalabandha FRU	CHC	50000	
220	Nagaon	Kawaimari FRU	CHC	50000	
221	Nagaon	Uluoni	CHC	50000	
222	Nagaon	Bamuni	CHC	50000	
223	Nagaon	Doboka	CHC	50000	
224	Nagaon	Mowamari	CHC	50000	
225	Nagaon	Rupohi	CHC	50000	
226	Nagaon	Kachua	CHC	50000	
227	Nagaon	Buragohainthan	PHC	50000	
228	Nagaon	Dagaon PHC	PHC	50000	
229	Nagaon	Juria MPHC	PHC	50000	
230	Hojai	Nilbagan	CHC	50000	
231	Hojai	Lanka BPHC	PHC	50000	
232	Hojai	Jugijan	CHC	50000	
233	Hojai	Hojai FRU	CHC	50000	
234	Nalbari	Nalbari DH	DH	50000	600000
235	Nalbari	Kokoya CHC	CHC	50000	
236	Nalbari	Bhanganamari CHC	CHC	50000	
237	Nalbari	Kakaya CHC	CHC	50000	
238	Nalbari	M.G. Model Hospital, Makhibaha	CHC	50000	
239	Nalbari	Tihu FRU	CHC	50000	
240	Nalbari	Khatikuchi	CHC	50000	
241	Nalbari	Marowa MPHC	PHC	50000	
242	Nalbari	Banekuchi MPHC	PHC	50000	
243	Nalbari	Jagara PHC	PHC	50000	
244	Nalbari	Daulasal MPHC	PHC	50000	
245	Nalbari	Barkhala MPHC	PHC	50000	
246	Charaideo	Sonari SDCH	CHC	50000	300000
247	Charaideo	Naradkumar Mini	PHC	50000	
248	Charaideo	Tengapukhuri PHC	PHC	50000	
249	Charaideo	Patsaku BPHC	PHC	50000	
250	Charaideo	Lakwa Model Hospital	CHC	50000	
251	Charaideo	Sapekhati BPHC	PHC	50000	
252	Sivasagar	Sivsagar DH	DH	50000	550000
253	Sivasagar	Amguri CHC	CHC	50000	
254	Sivasagar	Ligiripukhuri SDCH	CHC	50000	
255	Sivasagar	Sapekhati Model Hospital	CHC	50000	
256	Sivasagar	Dikhowmukh MPHC	PHC	50000	



257	Sivasagar	Bokota MPHC	PHC	50000	
258	Sivasagar	Desangmukh MPHC	PHC	50000	
259	Sivasagar	Nazira SHC	PHC	50000	
260	Sivasagar	Bamrajabari MPHC	PHC	50000	
261	Sivasagar	Banmukh MPHC	PHC	50000	
262	Sivasagar	Dehingmukh SHC	PHC	50000	
263	Biswanath	Biswanath Chariali	SDCH	50000	100000
264	Biswanath	Gohpur CHC	CHC	50000	
265	Sonitpur	Kanaklata DH	DH	50000	550000
266	Sonitpur	North Jamuguri CHC	CHC	50000	
267	Sonitpur	Kolabari Model Hospital	Model Hospital	50000	
268	Sonitpur	Borgang Model Hospital	Model Hospital	50000	
269	Sonitpur	Balichang Model Hospital	Model Hospital	50000	
270	Sonitpur	Kusumtola Model Hospital	Model Hospital	50000	
271	Sonitpur	Sirajuli Model Hospital	Model Hospital	50000	
272	Sonitpur	Balipara PHC	PHC	50000	
273	Sonitpur	Rowmari SD	PHC	50000	
274	Sonitpur	Bedeti PHC	PHC	50000	
275	Sonitpur	Behali BPHC	PHC	50000	
276	Tinsukia	Mohkhuli CHC	CHC	50000	750000
277	Tinsukia	Kothalguri Model Hospital	Model Hospital	50000	
278	Tinsukia	Hapjan BPHC	PHC	50000	
279	Tinsukia	Nasadiya BPHC	PHC	50000	
280	Tinsukia	Santipur MPHC	PHC	50000	
281	Tinsukia	Jagun MPHC	PHC	50000	
282	Tinsukia	Ketetong BPHC	PHC	50000	
283	Tinsukia	Phillobari Model Hospital	CHC	50000	
284	Tinsukia	Chepakhowa CHC	CHC	50000	
285	Tinsukia	Doomadoma CHC	CHC	50000	
286	Tinsukia	Ledo	PHC	50000	
287	Tinsukia	Barekuri MPHC	PHC	50000	
288	Tinsukia	Bordubi MPHC	PHC	50000	
289	Tinsukia	Saikhowaghat SD	PHC	50000	
290	Tinsukia	Hassak MPHC	PHC	50000	
291	Udalguri	Udalguri DH	DH	50000	500000
292	Udalguri	Tangla	CHC	50000	
293	Udalguri	Orang	CHC	50000	
294	Udalguri	Bhergaon	CHC	50000	
295	Udalguri	Pauripota SD	PHC	50000	
296	Udalguri	Khoirabari CHC	CHC	50000	
297	Udalguri	Udalguri BPHC	PHC	50000	
298	Udalguri	Bamunjuli MPHC	PHC	50000	

299	Udalguri	Dimakuchi New PHC	PHC	50000	
300	Udalguri	Pachim patla PHC	PHC	50000	
<b>Total</b>					<b>15000000</b>

### Activity no 8 f

**FMR code 13.2.4 (Total Approval = Rs3.3 Lakhs)**

**FMR Owner & Responsible Person: At State HQ: State Consultant, Quality**

**Assurance**

**Level of the Activity:** State level

**Name of the activity:** Contingencies

**Type of the activity:** Ongoing activity

**About the activity: State Level – for additional support**

This fund will be utilized at State level for the following activities:

1. Honorarium for Peer and External assessment for NQAS
2. Printing of Coffee table book.
3. Organizing Kayakalp Award ceremony at State level.
4. Purchase of mementos/trophies/certificates for the State level Award ceremony.

**This fund will be kept at State HQ**

### Activity No 8 g

### Activity no 8 h

**FMR code 13.2.6 (Total Approvals = Rs 15.02 Lakhs)**

**FMR Owner & Responsible Person: At State HQ: State Consultant, Quality**

**Assurance**

**District : DPM/DQC/HA/DAM**

**Level of the Activity:** State level and District level

**Name of the activity: Any other (Please Specify)**

**Type of the activity:** New and ongoing activity

**(1)Budget of Rs 8.56 Lakhs approved for honorarium for peer Assessment of facilities @Rs 500 (DH/SDCH/FRU/CHC/Model Hospitals/PHC/MPHC) for NQAS/Kayakalp (for an estimated assessment of 26 DH, 180 SDH/CHC, 650 PHC).Since this amount is based on estimated figures, 70% of the amount that is Rs 6.00 Lakhs shall be released now. Rest 30 % will be released based on actual requirement after submitting SOE. District break up given in detailsRest Rs. 2.56 lakhs (of total of Rs 8.56 Lkabs) will be kept in the State HQ.**

**(2) Budget of Rs 6.46 Lakhs approved for honorarium for external Assessment of facilities (DH/SDCH/FRU/CHC/Model Hospitals/PHC/MPHC)for NQAS/ Kayakalp(for an estimated assessment of 23 DH, 100 SDH/CHC, 200 PHC) at the unit cost of Rs 1000to be kept at State HQ.**

**Table 1 (8h) ESTIMATED HONORARIUM FOR PEER ASSESSMENT OF HEALTH FACILITIES**

District	Estimated no of DH for Peer assessment	Estimated no of SDCH/CHC for Peer assessment	Estimated no of PHC for Peer assessment	Estimated no of total facilities for Peer assessment	Honorarium per assessor per facility (In Rs)	Estimated Honorarium for peer assessment for two persons (In Rs.)
	(a)	(b)	(c)	(d)	(e)	(d)*(e)*2
Baksa	1	5	20	26	500	26000
Barpeta	1	9	20	30	500	30000
Bongaigaon	1	4	15	20	500	20000
Cachar	1	4	16	21	500	21000
Chirang	1	3	5	9	500	9000
Darrang	1	7	15	23	500	23000
Dhemaji	1	4	10	15	500	15000
South Salmara	0	1	4	5	500	5000
Dhubri	1	5	20	26	500	26000
Dibrugarh	0	8	14	22	500	22000
DimaHasao	1	2	5	8	500	8000
Goalpara	1	5	21	27	500	27000
Golaghat	1	4	20	25	500	25000
Hailakandi	1	3	7	11	500	11000
Majuli	0	1	3	4	500	4000
Jorhat	0	5	20	25	500	25000
Kamrup Metro	1	3	12	16	500	16000
Kamrup Rural	1	12	25	38	500	38000

West Karbi Anglong	0	1	4	5	500	5000
KarbiAnglong	1	3	6	10	500	10000
Karimanj	1	7	16	24	500	24000
Kokrajhar	1	2	10	13	500	13000
Lakhimpur	1	8	16	25	500	25000
Morigaon	1	5	10	16	500	16000
Hojai	0	1	5	6	500	6000
Nagaon	1	16	20	37	500	37000
Nalbari	1	11	20	32	500	32000
Charaideo	0	1	5	6	500	6000
Sivasagar	1	4	22	27	500	27000
Bishwanath	0	1	5	6	500	6000
Sonitpur	1	8	15	24	500	24000
Tinsukia	1	9	10	20	500	20000
Udalguri	1	5	5	11	500	11000
<b>Total for 33 districts in Rupees</b>	<b>25</b>	<b>167</b>	<b>421</b>	<b>613</b>	<b>16500</b>	<b>613000</b>
<b>State HQ allocation in Rupees</b>						<b>889000</b>

- **NB** : The honorarium for peer assessment @ Rs 500 per assessor is equal for DH/SDCH/MH/CHC/FRU/PHC level and doesn't depend upon the number of days taken to conduct the assessment. For example, if there are two assessors conducting peer assessment of a DH in two days will be eligible for Rs 500 each per facility. This honorarium fee is eligible for both NQAS and Kayakalp.
- **The honorarium fee for Kayakalp will be claimed from FMR code 13.2.1 initially until the funds are exhausted. Only when funds are exhausted, it will be claimed under FMR code 13.2.6.**

- **The honorarium fee for NQAS will be claimed from FMR code 13.2.6 at the rate of Rs 500 per assessor per facility for peer assessment. External assessment will only be done by State level.**
- **Honorarium will be given only for Peer and External assessment. Peer assessment honorarium will be given from District health Society where peer assessment is done. External assessment honorarium will be given from State HQ.**

### Activity 8 a

**FMR code: 13.3.1**

**Name of the activity:** Comprehensive Grievance Redressal Mechanism

**Level of the Activity:** District and facility level

**Type of the activity:** New activity

About the activity:

The National Rural Health Mission (NRHM) launched in 2005, subsequently subsumed under the overarching National Health Mission, envisaged an accountability framework and introduced many entitlements based interventions such as Janani Shishu Suraksha Karyakram (JSSK) and basket of assured free services. Public health services now face rising expectations from the beneficiaries who have become more aware of what they need and what is available in terms of medical care. This has necessitated setting up of effective grievance redressal mechanisms to address clients' concerns and enforce the NHM entitlements including provision of free drugs, free diagnostics etc.

Establishment of GRS and Health Help line would bring in uniform standards in the State of Assam. The following features are a part of the GRS and Health Help line system;

- a. Grievance redressal through help desks, call centre and web portal.
- b. Simple and user friendly, one time, single window system to register the grievance.
- c. A system to track, investigate, resolve and document the complaint.
- d. Follow up and reporting mechanism.
- e. Time bound redressal of grievances.
- f. Mechanism to give feedback to complainant.
- g. Confidentiality of complainants' details.
- h. Integrated Health Help line offered through call centre and web portal

Grievance redressal process and Health help line for Tele-consultation will be implemented through common channels that will be used to register the grievances as well as to provide the tele-consultation/health advice/health information and also other services. This system will be implemented through three components i.e.

1. **GR Help Desk** Will be implemented in all DHs and SDCH level facilities. A patient or attendant having any grievance against the health facility can approach the Grievance redressal help desk. A registration

number will be issued for the reported grievance and estimated time to revert back will also be communicated.

2. Call Centre (already in place)
3. Web Portal

A budget of Rs 21.386 lakhs is approved for Comprehensive Grievance Redressal Mechanism in 39 facilities (24 DH, 1 MMCH and 14 SDCH) of Assam. A hoarding on information related to 104 and how to register grievance will be displayed. IEC pamphlets will be kept on the help desk. A state level training of 2 existing staff will be done on Comprehensive grievance mechanism from each of these facilities.

IEC will be shared by state cell

The budget break up is given below:

SI No	Particulars	Budget In Rs	Remarks
1	Hoardings on IEC for 104	Rs 40000	One hoarding each for one facility will be displayed
2	IEC pamphlets on various Central and State Schemes	Rs 10000	Various schemes and helpline no will be printed in local language and circulated among patients
Total Budget proposed for 1 facility		Rs 50,000	
<b>A) Total Budget proposed for 39 facilities ( 24 DH, 1 MMCH and 14 SDCH) on IEC</b>		<b>Rs 50,000* 39= Rs 1950000</b>	
<b>B) Budget for Training of Human Resource from selected facilities at State level</b>		<b>Rs 188600</b>	Will be initiated with existing staff. Required staff will be trained on GR mechanism
<b>A + B= Total Budget for Comprehensive grievance redressal system</b>		<b>Rs 2138600</b>	<b>Rs 21.386 lakhs is proposed for Comprehensive Grievance Redressal system for 39 facilities</b>

List of facilities for Greivance redressal			
SI	District	Name of the Health Institution	Budget approved
1	Barpeta	Barpeta Civil Hospital, Kalgachia	50000
2	Barpeta	Pathsala SDCH	50000
3	Bongaigaon	Bongaigaon Civil Hospital	50000
4	Cachar	Satyendra Mohan Dev Civil Hospital	50000
5	Darrang	Mangaldai Civil Hospital	50000
6	Dhemaji	Dhemaji Civil Hospital	50000
7	Dhubri	Dhubri Civil Hospital	50000

8	Dima Hasao	Haflong Civil Hospital	50000
9	Goalpara	Goalpara Civil Hospital	50000
10	Golaghat	Bokakhat SDCH	50000
11	Golaghat	Swahid Kushal Konwar Civil Hospital	50000
12	Hailakandi	Sontosh Kumar Roy Civil Hospital	50000
13	Kamrup Metro	Sonapur DH	50000
14	Kamrup Metro	MMCH,Panbazar	50000
15	Kamrup Rural	Tolaram Bafna Kamrup District Civil Hospital	50000
16	Karimganj	Karimganj Civil Hospital	50000
17	Kokrajhar	R.N.B. Civil Hospital, Gossaigaon	50000
18	Kokrajhar	Rupnath Brahma Civil Hospital, Kokrajhar	50000
19	Lakhimpur	Dhakuakhana SDCH	50000
20	Lakhimpur	North Lakhimpur Civil Hospital	50000
21	Morigaon	Morigaon Civil Hospital	50000
22	Nagaon	Bhogeswari Phukanani Civil Hospital, Nagaon	50000
23	Nalbari	Swahid Mukunda Kakati Civil Hospital, Nalbari	50000
24	Charideo	Sonari SDCH	50000
25	Sivasagar	Ligripukhuri	50000
26	Sivasagar	Sivasagar Civil Hospital	50000
27	Sonitpur	Kanaklata Civil Hospital	50000
28	Tinsukia	Lokpriya Gopinath Bordoloi Civil Hospital	50000
29	Baksa	Dr. Ravi Boro Civil Hospital Baksa	50000
30	Chirang	J.S.B CIVIL Hospital Chirang	50000
31	Udalguri	Udalguri Civil Hospital	50000
32	Majuli	Garmur SDCH	50000
33	Biswanath Chariali	Gohpur SDCH	50000
34	Biswanath Chariali	Biswanath Chariali SDCH	50000
35	Jorhat	Titabar SDCH	50000
36	South Salmara	Hatsingimari SDCH	50000

### Activity No 9

#### **FMR 16.1 – Program Management Fund**

FMR	Particulars	GOI remarks	Approval (Lakhs)	Level of activity
16.1.2.1.10	State Quality Assurance Unit (Review meeting)	2 QAU meeting @ Rs 0.1 Lakhs per meeting	0.2	State
16.1.2.1.11	District Quality Assurance Unit (Review meeting)	1.35 L is approved for quarterly district QAC review meeting @ Rs 0.5 L lumpsum * 4 meetings for 27 districts	<b>1.35</b>	<b>District</b>
16.1.2.2.3	State Quality Assurance Unit (Monitoring & Evaluation)	Budget of Rs 2.4 L is approved for State level Monitoring and evaluation	2.40	State
16.1.4.1.3	State Quality Assurance Unit (operational costs)	Budget of Rs 1.2 L is approved for operational cost @ Rs 0.10 L per month * 12 months	1.2	State
16.1.4.2.1	District Quality Assurance Unit (operational costs)	Budget of Rs 9.90 L is approved for operational cost @ Rs 0.30 L per district for 33 districts	<b>9.90</b>	<b>District</b>

### Activity 9 a

**FMR code 16.1.2.1.11**(Total Approvals = Rs 1.35 Lakhs)

**FMR Owner & Responsible Person:**District:DPM/DQC/HA/DAM

**Level of the Activity:** District level

**Name of the activity:** District Quality Assurance Unit (Review meeting)

**Type of the activity:** Ongoing activity

#### **About the Activity:**

District Quality Assurance meetings have to be mandatorily conducted once every 3 months (4 meetings in a year). **The minutes of the meeting and action taken on previous minutes have to be shared with the State Quality Assurance unit and also to be uploaded in the website.** The minutes should contain the review of action plan for the last meeting held and action plan for the current month. Periodic analysis of Patient satisfaction survey, outcome indicators, grievance redressal, gap assessment of internal assessments should be done along with timelines and responsible persons. **Action would be taken for those districts who will not comply with H'ble Supreme Court orders of uploading the meeting minutes.**



**Approved cost of DQAC meetings @ Rs5000 lumpsum for 4 meetings per district for 27 old districts**

**Activity 9b**

**FMR code 16.1.4.2.1**(Total Approvals = Rs 9.90 Lakhs)

**FMR Owner & Responsible Person:**District :DPM/DQC/HA/DAM

**Level of the Activity:** District level

**Name of the activity:** District Quality Assurance Unit (operational costs)

**Type of the activity:** Ongoing activity

**About the Activity:**

Approved Operational Cost of Rs 30000 per district (@ Rs 2500 per month) can be utilized for Printing, Stationary and other contingencies.

**District wise fund breakup under FMR 16.1 Program Management Fund**

<b>Sl.No.</b>	<b>District/ State HQ</b>	<b>FMR Code: 16.1.2.1.11 District Quality Assurance Unit (Review meeting) (In Rs.)</b>	<b>FMR Code: 16.1.4.2.1 District Quality Assurance Unit (operational costs) (In Rs.)</b>	<b>Total Fund allotted to the districts (In Rs.)</b>
1	Baksa	5000	30000	35000
2	Barpeta	5000	30000	35000
3	Bongaigaon	5000	30000	35000
4	Cachar	5000	30000	35000
5	Chirang	5000	30000	35000
6	Darrang	5000	30000	35000
7	Dhemaji	5000	30000	35000
8	Dhubri	5000	30000	35000
9	South Salmara	0	30000	30000
10	Dibrugarh	5000	30000	35000
11	DimaHasao	5000	30000	35000
12	Goalpara	5000	30000	35000
13	Golaghat	5000	30000	35000
14	Hailakandi	5000	30000	35000
15	Jorhat	5000	30000	35000
16	Majuli	0	30000	30000

17	Kamrup (M)	5000	30000	35000
18	Kamrup (R)	5000	30000	35000
19	KarbiAnglong	5000	30000	35000
20	West karbi anglong	0	30000	30000
21	Karimganj	5000	30000	35000
22	Kokrajhar	5000	30000	35000
23	Lakhimpur	5000	30000	35000
24	Morigaon	5000	30000	35000
25	Nalbari	5000	30000	35000
26	Nagaon	5000	30000	35000
27	Hojai	0	30000	30000
28	Sivasagar	5000	30000	35000
29	Charaideo	0	30000	30000
30	Sonitpur	5000	30000	35000
31	Biswanath	0	30000	30000
32	Tinsukia	5000	30000	35000
33	Udalguri	5000	30000	35000
<b>Total for 33 district</b>		<b>135000</b>	<b>990000</b>	<b>1125000</b>

**Annexure-A**



<b><u>List of 10 DHs for NQAS (2021-22)</u></b>		
<b><i>S.No.</i></b>	<b><i>District</i></b>	<b><i>Name of Health Institution</i></b>
1	Baksa	Dr. Ravi Baro Civil Hospital
2	Bongaigaon	Bongaigaon Civil Hospital
3	Cachar	Satyendra Mohan dev Civil Hospital
4	Lakhimpur	Civil Hospital, Lakhimpur
5	DimaHasao	Haflong Civil Hospital
6	Kamrup Metro	Sonapur DH
7	Nagaon	MCH Wing, Nagaon
8	Nalbari	S.M.K. Civil Hospital
9	Sivasagar	Sivasagar Civil Hospital
10	Tinsukia	L.G.B. Civil Hospital
<b><u>List of 10 CHCs for NQAS (2021-22)</u></b>		
<b><i>S.No.</i></b>	<b><i>District</i></b>	<b><i>Name of Health Institution</i></b>
1	Dhemaji	Silapathar CHC
2	Dibrugarh	Moran Tiloil CHC
3	Golaghat	Bokaghat SDCH
4	Hailakandi	Algapur
5	Barpeta	Pathshala SDCH
6	Nalbari	Tihu FRU
7	Kamrup (R)	Sualkuchi FRU
8	Kamrup (M)	Pandu FRU
9	Sivasagar	Demow Model Hospital
10	Udalguri	Rowta Model Hospital
<b><u>List of 30 PHCs for NQAS (2021-22)</u></b>		
<b><i>S.No.</i></b>	<b><i>District</i></b>	<b><i>Name of Health Institution</i></b>
1	Baksa	Kumarikata SD
2	Baksa	Dighaldanga MPHC
3	Barpeta	Gomura MPHC
4	Bongaigaon	Lengthisinga PHC
5	Cachar	Harinagar BPHC
6	Darrang	Garukhuti MPHC
7	Darrang	Kenduguri MPHC
8	Dhubri	Golakganj PHC
9	Dhubri	Bilasipara SHC
10	Dibrugarh	Barbaruah PHC

11	DimaHasao	Mahur PHC
12	Golaghat	Sumanigaon PHC
13	Goalpara	Agia PHC
14	Goalpara	20 bedded maternity hospital
15	Jorhat	Tipomia SD
16	Karimganj	Bazirchera PHC
17	Kokrajhar	Balajan PHC
18	Kokrajhar	Dholmara PHC
19	Lakhimpur	Chauldhua MPHC
20	Nalbari	Ghagrapar BPHC
21	Nalbari	Solmara MPHC
22	Nagaon	Upper dumdumia
23	Sonitpur	Bishnubara SD
24	Tinsukia	Boridirak PHC
25	Kamrup (M)	Nortap PHC
26	Sivasagar	Gaurisagar BPHC
27	Udalguri	Orang BPHC
28	Golaghat	KB Ali
29	Jorhat	Mariani MPHC
30	Bongaigaon	Patiladaha MPHC

<b>List of certified Internal Assessors</b>		
<b>S.no.</b>	<b>Name</b>	<b>District</b>
1	Dr.Kumud Bania	Nalbari
2	Dr.Gobil Thapa	Karbi Anglong
3	Dr.Dhrubajyoti Pathak	
4	Dr.Priyanka Devi	Golaghat
5	Jesmine Rahman	Cachar
6	Dr.Rejaul Karim	Dhubri
7	Rumi Kujur	Kamrup M
8	Dr.Anjana Das	Goalpara
9	Dr.Pulak Paul	Tinsukia
10	Sabana N Choudhury	Hojai
11	Dr Madhurjya Baruah	Sonitpur
12	Gunojit Narzary	Sonitpur
13	Jimi Moni Hazarika	Jorhat
14	Chayanika Dutta	Darrang
15	Dr Mukuta Medhi	Kamrup M
16	Monica Deka Dutta	Kamrup R
17	Basanta Biraj Das	Kamrup M
18	Smita Roy	Bongaigaon
19	Dr.Jyotirmoy Das	Nalbari
20	Dr.Rupam Borkakoty	Sivasagar
21	Dr Doris Nampui	Dima Hasao
22	Dinamani Thakuria	Kamrup R
23	Dr.Md.Badrul Islam	
24	Dr.Atowar Rahman	
25	Dr.Rofiqul Islam	
26	Dr. Mridusmita Kachari	Dima Hasao
27	Dr. Rajib Kumar Baruah	Sivasagar
28	Hemanga Medhi	Nagaon
29	Nayan Jyoti Goswani	Dima Hasao

30	Dr. Hiteswar Gogoi	Nagaon
31	Samiran Sharma	Sivasagar
32	Hemanta Kalita	Sonitpur
33	Karabi Borgohain	Tinsukia
34	Nabadip Sharma	Nalbari
35	Dr. Avinash Kumar	Tinsukia
36	Kalpana Bharali	Sivasagar
37	Subrata Daulagupu	Dima Hasao
38	Soraisham Lakhiman Singh	Karbi Anglong
39	Dr. Nabajyoti Gogoi	Dibrugarh
40	DR.MUNINDRA MEDHI	Darrang
41	CHIRANTON PAREH	Dhubri
42	DR.JAHIRUDDIN AHMED	Hailakandi
43	SHARMISTHA PHUKAN	Kamrup M
44	CHINMOY DAS	Kokrajhar
45	DR.BHADRA KANTA SHARMA	Udalguri
46	GAUTAM MOHILARY	Chirang
47	Dr Bishwajit Baruah	Dibrugarh
48	Dr. Durgeswar Sarma	Darrang
49	Dr. Hemanta Kr. Borah	Kamrup R
50	Banani Bharali	Kamrup R
51	Rijumoni Barman	Morigaon
52	Dr Narzeen M Barbhuyan	Cachar
53	Dr Silpi Saikia	Lakhimpur
54	Dr Bhupen Saikia	Lakhimpur
55	Dr JadumonI Kakoty	Darrang
56	Dr Rini Duarah	Sonitpur
57	Dr Meera Bora	Kamrup M
58	Dr Nilim Konwar	Dibrugarh
59	Dr Arun Ch Mahanta	Sivasagar
60	Imdadul Islam	Dhubri
61	Apurba Das	Karimganj
62	Ashima Buragohain	Sivasagar
63	Dr Geeta Devi	Kamrup R
64	Dr Hiren Kr Saikia	Golaghat
65	Dr Sudip Ranjan Dey	Udalguri
66	Dr Rashmi Thakuria	Dibrugarh

67	Rashmi Dolley	Dhemaji
68	Bikash Ranjan Dutta	Barpeta
69	Noor Haque	Tinsukia
70	Indrajit Dey	Cachar
71	Nemhoiting Vaiphei	Dima Hasao
72	Dr. Ayub Ali	Nalbari
73	Sourav Saikia	Lakhimpur
74	Ajay kalita	Bongaigaon
75	Dr Gunindra Nath Debo Sarma	Karbi Anglong
76	Dr. Rana Mukut Keot	Sonitpur
77	Ms Kakali Deka	SHQ
78	Ms Mumtaz Mazumdar	SHQ
79	Ms Tanushree Pathak	SHQ
80	Ms Bhagya Devi Das	SHQ
81	Dr Rahul Kr Sarmah	SHQ
82	Dr Rohini Kumar	SHQ